

Wintrax® User Manual

**Wintrax® Jukebox Software  
PC/CD-Player Control Software  
for Pioneer® and Sony® Mega/Giga Changers**

# **User Operation Manual**

**Version 1.4.7**

Updated through January 5, 2001

**©1996-2001 Wintek Software Company  
All Rights Reserved  
Duplication Prohibited**

**Single User License  
Only**

**Wintek Software Company  
Post Office Box 330655  
Fort Worth, TX 76163-0655  
Phone 817-370-7429  
Facsimile 817-370-7411  
Internet: [www.cdcontrol.com](http://www.cdcontrol.com)  
E-Mail: [info@cdcontrol.com](mailto:info@cdcontrol.com)**

## Table of Contents

User Operation Manual .....	1
Version 1.4.7 .....	1
<b>BEGIN: Draft of New Document Outline .....</b>	<b>6</b>
Introduction .....	6
Overview of WINTRAX .....	6
Who uses it and for what .....	6
What are its advantages .....	6
What are its limitations .....	6
A quick tour of the main screens and functions .....	6
Getting Started.....	7
System requirements.....	7
Software.....	7
Operating systems.....	7
Utilities .....	7
Optional software .....	7
Hardware .....	7
Player(s).....	7
Audio system .....	7
Computer .....	7
Cables .....	7
Optional hardware .....	7
Additional parallel port.....	7
Deluxe parallel port .....	7
Serial port controller.....	7
Stereo audio mixer.....	7
Installing WINTRAX .....	7
Installing the software.....	7
Setting up preferences .....	7
Installing the hardware .....	7
Optional deluxe parallel port adapter .....	7
Optional passive stereo audio mixer .....	7
Connecting player(s) & PC cables.....	7
Using builtin parallel port support.....	7
Using PSR serial port support .....	7
PC audio adapter for wav/mp3/mp4 .....	7
<b>END: Draft of New Document Outline .....</b>	<b>7</b>
Wintrax® CD Jukebox Software.....	8
Introduction and Purpose.....	9
Secondary LPT port.....	9
Operating systems supported.....	10
How Wintrax controls the players .....	10
CD Player Compatibility .....	11
Installation/Setup Instructions .....	12
SOFTWARE INSTALLATION.....	14
Using the sample data.....	15
Errors and problems during installation or upgrades.....	15
Special Consideration for the Pioneer® AD-PD1 Three-Player Controller .....	16
Updates to your Wintrax Software .....	16

Installing WINTRAX to a drive other than C:.....	17
[Paths].....	17
[Web].....	17
Preferences Setup .....	18
Basic setup.....	18
1. Enter registration information.....	18
2. Activate and connect the players .....	18
3. Review and setup the music categories.....	19
4. Review and setup user names .....	19
5. Select the player control address .....	19
5. Set player song end and cue options.....	20
6. Automatic operation settings .....	21
Additional settings that you may want to change.....	22
1. Play List Control.....	22
2. Startup and shutdown options.....	22
3. Advanced player controls .....	22
4. Miscellaneous settings .....	23
Completing setup.....	23
Main Wintrax Screen.....	24
Passwords .....	29
RemoveSong= NULL.....	29
Play List Grid .....	29
The column title abbreviations are: .....	30
Album Search Screen .....	31
Album Songs Select Screen.....	32
Song/Album Search Screens.....	34
Find Screen.....	36
Manual Control Screen.....	37
Database Management Screen .....	38
Song Data Grid.....	40
Wave files.....	43
Pause Control Cuts .....	43
Collecting CD Cover Art.....	44
Scanning Images.....	44
Capturing Internet Images .....	44
Additional NETSCAPE step .....	45
CD WIZZARD .....	46
Using CD Wizzard to import CD data from the Internet and into Wintrax: .....	46
CD Wizzard “Export Options” screen.....	47
Tray Maintenance .....	49
Filter Screen .....	49
Reports Output Screen.....	50
Report options are.....	51
Software Updates/Upgrades .....	52

Software and Hardware Setup .....	53
Hardware Setup .....	53
Pioneer® Players .....	53
Sony® Players .....	53
Software Registration .....	53
Damage Disclaimer .....	55
Refunds & Returns .....	55
Index .....	56
Appendices .....	59
Appendix A: Passive Stereo Audio Mixer .....	59
Passive Mixer Photo and Schematic .....	59
Appendix B: X-10 Remote Control .....	62
Appendix C: Start and End Signals .....	64
Start/EOM .....	64
[WARNING: Semi-Technical Data follows, skip it if you want!] .....	64
Appendix D: Pioneer European Player Modification .....	65
Appendix E: Making a Pioneer®/Sony® LPT Control Cable .....	66
Making your own player cable from modular telephone cable .....	66
Appendix F: Wintrax® Late Release Notes .....	68
LISTBOT] .....	68
CD WIZZARD .....	68
DEDICATION .....	68
COMMON UPGRADE PROBLEMS .....	68
Appendix G: Known bugs & issues .....	69
Appendix H: Upgrade history & undocumented features .....	70
v1.4.7 - January 2001 .....	70
v1.4.6.6 - Dec 30 2000 .....	70
v1.4.6.5 - Dec 22 2000 .....	70
v1.4.6* - Oct 23 2000 (note the * after the 6) .....	70
v1.4.6+ - Sep 29 2000 (note the + after the 6) .....	70
v1.4.6. - Sep 15 2000 (note the dot after the 6) .....	70
v1.4.6 - Aug 20 2000 .....	70
v1.4.5 - Aug 15 2000 .....	70
v1.4.4 - May 24 2000 (no release) .....	71
v1.4.2 - Apr 2000 (no release) .....	71
v1.4.0/1.4.1 - Oct 1999 .....	71
v1.3.8 - Sep 1999 .....	71
v1.3.7 - Sep 1999 .....	71
v1.3.6 - Sep 1999 .....	71
v1.3.5 - Aug/Sep 1999 .....	72
v1.3.2 - May 1999 .....	72
v1.3.0 - Feb 1999 .....	73
v1.2.9 - Dec 1998 .....	73
v1.2.8 - Oct 1998 .....	73
v1.2.7 .....	74
v1.2.6 .....	74
v1.2.5 .....	74
v1.2.4 .....	75

v1.2.2 'Released April 26, 1998.....	75
v1.2.1 'Released April 19, 1998.....	76
v1.02.00 'Released March 1998.....	76
v1.02.00 - (items fixed since 1.01.32) .....	77
Appendix I: Testing your connections .....	78
Appendix J: License Agreement .....	79
Single End User Product License Agreement And Limited Warranty.....	79
Appendix K: Product Registration Form .....	80

**BEGIN: Draft of New Document Outline**

**Introduction**

---

*Overview of WINTRAX*

*Who uses it and for what*

*What are its advantages*

*What are its limitations*

*A quick tour of the main screens and functions*

## **Getting Started**

---

### ***System requirements***

#### **Software**

**Operating systems**

**Utilities**

**Optional software**

#### **Hardware**

**Player(s)**

**Audio system**

**Computer**

**Cables**

#### **Optional hardware**

**Additional parallel port**

**Deluxe parallel port**

**Serial port controller**

**Stereo audio mixer**

### ***Installing WINTRAX***

#### **Installing the software**

#### **Setting up preferences**

#### **Installing the hardware**

**Optional deluxe parallel port adapter**

**Optional passive stereo audio mixer**

#### **Connecting player(s) & PC cables**

Using builtin parallel port support

Using PSR serial port support

PC audio adapter for wav/mp3/mp4

**END: Draft of New Document Outline**

**Wintrax® CD Jukebox Software**  
**©1996-2001 Wintek Software Company**

(Corrected for Version 1.4.7 - December 2000)

*See notes at the end of this document, and WTNOTES.TXT  
for changes that may not be reflected in this manual.*

Thank you for buying Wintrax. Wintrax is a state-of-the-art software program that controls compact-disc players via either a special printer port cable or a serial port controller device. The LPT printer port control method is an inexpensive way to control up to four Pioneer PD-F file-type mega/giga CD changers and/or four Sony CDP-CX file-type mega/giga changers.

Wintek Software Company also makes a serial port control device for Pioneer changers called a PSR-4/8P and PSR-4/8S for Sony changers. The PSR-4 controllers control up to four CD changers and the PSR-8 serial port controller allows controlling up to eight CD players using the Wintrax software. They are available from our company and our distributors only. The PSR devices allow control of up to 12 or 24 Pioneer or Sony devices (CD changer, Laser Disc, Cassette Decks, etc) if you develop your own software. This control is beyond the scope of what our Wintrax software was written for however.

Before beginning installation, please read the WINTRAX.DOC, the latest version of this manual, and the WTNOTES.TXT file for the latest changes and updates. These documents can be found on our web site at [www.cdcontrol.com](http://www.cdcontrol.com). A copy of the WTNOTES.TXT is in your C:\Wintrax sub-directory. Also ready any other text files (file extension of .TXT) such as the README.TXT and CDDB.TXT files. These files are located in the C:\Wintrax sub-directory after installing the software. Also be sure you have read, understand, and agree with the "Single User License and Limited Warranty Agreement" towards the end of this document.

## Introduction and Purpose

---

Every effort has been made to provide accurate data within this manual, but the likelihood of errors and changes to features always exists. We reserve the right to make changes, enhancements, add, or remove features without further notice, whether documented or undocumented. The WTNOTES.TXT file on our web site always presents the latest changes when upgrades are implemented.

Wintrax is a software database and control package that allows you to catalogue your CD library, as well as control your home consumer Pioneer® and Sony® compact-discs (CD) players via your personal computer (PC). Wintrax adds a significant amount of control to the CD players, allowing you to control them in many new and wonderful ways.

Currently there are no PC interfaces available from any of the previously mentioned companies or our competitors that offer this accurate level of control. Throughout this manual, Wintrax might be referred to as "the software" or "the jukebox software".

The only additional hardware required to control your CD player is a PC, a PC LPT port (or line printer port), and a special cable, that you can purchase from us or make yourself with a few parts from your local electronics store.

The custom cable just plugs right into the back of your CD player and into the LPT port. Sounds too simple doesn't it. Well, you probably knew someone would think of it!

The Radio Shack Optimus® model CD-100 player is built exactly the same as the Pioneer® decks. It is all right to assume that all statements regarding the Pioneer® players will also equally apply to that Optimus® player. It's no secret that it was built and designed by Pioneer Electronic Corp. and licensed to Radio Shack. Likewise the Radio Shack RCA® mega changers are also compatible.

The cable and the Deluxe LPT port card are optionally available when you purchase the software. You may build the cable yourself and/or buy the port card elsewhere if you prefer, but we guarantee our cable and card to work with Wintrax. As you would expect, we offer no support for customer provided hardware.

Specifications are provided later in this document for building a cable. The cable should not be more than 24-feet without an electronic printer port with pull-up resistors and port signal amplifier of some type. Some printer ports will not even support cables of that length. Our special port card (Deluxe LPT Card) allows cable runs of 100 feet using category 5 telephone/LAN cable. This special Deluxe LPT port card has circuitry for providing more current for longer runs and buffer chips to reduce false triggers and dangerous static discharges that occur in cold weather, when you touch your Hi-fi gear. Longer runs can be accomplished by using our PSR Serial Controllers also.

The jukebox software sends modulated digital signals across the bi-directional LPT port data lines. The CD player reads these signals much like infrared commands from a remote control, and very much like they had been punched in with a handheld remote control, only magnitudes faster. A second data line returns signals from the Pioneer® CD players to notify the software that a song has started or ended, and when it is time to start another one. Sony® players do not currently offer this talk back feature.

### Secondary LPT port

Caution: Although you can run this software on your present LPT port, we strongly advise that you use a second LPT port for a number of reasons:

**First:** LPT printer ports are prone to static damage and become especially vulnerable if long cable lengths are used. Since many computers have printer ports embedded into or onto the motherboard nowadays, you certainly wouldn't want to risk any permanent damage from static electricity or other voltages that could sneak into the wiring. Most Hi-fi equipment, if not grounded properly, can create a phenomenon known as a "Ground Loop", which can introduce stray voltages into your PC or audio components. These voltage potentials more commonly cause a hum in your audio system.

**Note:** Radio Shack and most car audio suppliers carry a device known as a “Ground Loop Isolator”. (Radio Shack Catalog # 270-054, \$14.99). The GLI can help remove the hum, should you have trouble eliminating it by other practical means.

**Second:** By using a separate printer port, you don't have to worry about switching back and forth between your printer and CD player cables. The additional parallel printer port is usually cheaper than a printer switch, when you consider the extra cables needed for the switcher connections. It is more convenient, since there are no switches to worry with.

**Finally:** If you run the software from Windows® or any other multitasking environment, you may want to use your printer at the same time on other software. Having the extra LPT port resolves the conflict with little thought.

I hope we have convinced you of enough reasons to use a secondary LPT port to control your CD player. It's the safest, most efficient thing to do for trouble free operation. If you have problems getting your connections to work, see the troubleshooting notes at the end of this document.

### Operating systems supported

Wintrax® will only run on Windows® version 3.1, 3.11, 95, and 98. Wintrax will not run on Windows NT, since NT doesn't allow direct access to the LPT ports. Windows® is the trademark of Microsoft Corporation.

### How Wintrax controls the players

The signal sent to the CD player from our software does a number of things. It turns on the player, if it was off, and clears the program steps from any previous use of the player. Then it puts the player in PROGRAM mode, sends the player, disc, and track commands, as well as a display command for counting down of the song time, and a play command to start the player. The display counter varies on different players. Sometimes they count down, sometimes up, depending on whether the automatic end-of-song detection (EOM or End-Of-Message Signal) connection is used.

The PROGRAM command is used song-by-song so the player will play only one song without accidental drift into the next song should the end-of-song detection fail or should song times be incorrect. It provides a much more professional sound. This procedure is repeated for every song played. Wintrax will not play two songs in a row, even if they are recorded to drift into each other. The simple reason is that the program mode does not allow for this feature or behavior.

**Play List Mode** allows you to build a list of songs to play. The list, once saved, can be used over and over. You can reshuffle it as much as you like, so that the songs vary their order on subsequent uses of the list. This can be programmed by Wintrax to happen automatically when the list restarts.

**Jukebox Mode** on the other hand, allows songs to be requested on the fly, at any time. Songs can continually be requested or selected and will be played randomly or in the order selected, depending on setup options. In *random mode*, a song requested right now has just as good a chance of playing soon or next, as a song that may have been requested 30 minutes ago. This is much like a traditional jukebox works.

Wintrax was written to behave more like a Jukebox than a computer programmed music controller. We think this makes the software more user-friendly. However, there are limitations due to hardware constraints, like the inability to play two songs in a row that run into each other, and the inability to pick a whole CD at a time. You can do that with the manual control screen in Wintrax, but songs cannot be added to the play lists in that fashion.

## CD Player Compatibility

---



Pioneer® PD-F (File Type)



Pioneer® PD-F (Carousel Type)



Sony® CDP-CX (Carousel Type)

We get hundreds of calls about CD player compatibility. The Wintrax software will run Pioneer PD-Fxxx file type model players with 25/50/100/101 and 301-discs. (Check our web site occasionally for updates on newer CD changer products from Pioneer and Sony). This software was specifically designed to run with all of the Pioneer® PD-Fxxx multi-disc players with the Pioneer “SR” (system remote) logo. Included here also is the Radio Shack Optimus® CD-100 (same as a PD-F100).

Both stateside and overseas models of these machines will work only if the player has the CONTROL-IN and CD-SYNCHRO jacks on the rear panel. Some do, some don't. The European models are the ones to check carefully. Check the back of the machine before buying them to be sure that the needed jacks are present. We do know of a conversion to adapt these machines. That conversion is posted on our web site. We cannot recommend or support these conversions, but know they have been performed and usually do work. If you buy the cheaper 25-discs models "be sure" they have both the SR Control In and Control Out jacks, as well as the CD-Synchro jacks. The changer must be a model that supports a hand-held remote. While the remote is not needed, if the changer doesn't support the remote then it also doesn't support “direct track access”, which is a must for our software to work. Some of the newer Pioneer models do not have the CD-Synchro jack that is used for End-of-Song detection. Use of these changers is support, you just must be sure you have times for all songs that are loaded on these changers.

While it has been observed that the software does run other products from these two companies, it is not in the scope of this software to support those players or products.

This software will also control the Sony® CDP-CX151 and CDP-CX153 100-disc models as well as all CDP-CXxxx 200/300/400-discs models however see the cable instructions for variations on cabling. If you are curious if your model will work, check the back of the unit for the “S-Link/Control-A1” jacks. If they are present, then our software can control them. European and overseas customers should always check to be sure the jacks are present before ordering the software. We do not have any modifications for the Sony® changers if they don't have the jacks present. This software will control

This software has a database which requires you to enter data for each CD including the CD Title, CD Artist, Category, Disc ID Numbers, Tray Numbers, Times, Songs Titles, and Artists for each song. Once the initial data entry is done, entering the data as you purchase discs makes the task easier.

This software comes with program called CD Wizzard which will allow you to collect most of this information from a giant Internet database of over 500,000 CD titles. All you have to do is to make a

connection to your Internet provider, bring up the CD Wizzard, then insert CD's in to your PC's CDROM drive. Each disc is then identified. All you have to do is export the data over to Wintrax and add the Player and Tray number. This is explained in detail later in this manual.

There is a reward to all this work. You will be able to get alphabetized play lists, you will be able to search for and find songs and titles of CDs and CD cuts instantaneously. You also will gain control of your otherwise hard to control CD players, and can enjoy your music more. The biggest asset of this software is that it allows more than one player to work together and helps to manage large collections of CDs.

The other major advantage is being able to play your music at anytime, without handling the precious medium, which could be costly if they are damaged. Most customers find out after using the software that they are enjoying our music investment more, because they do not have to load, unload, and search for a CD or song. With the songs readily available on the scrolling request list, we also found songs we didn't realize we had! As you know, once you have a hundred or so CDs, it becomes a difficult task to remember what songs you have. We have hundreds of e-mails on file from users who have taken the time to write us and tell us the pleasure they have got out of being able to manage their music library.

Once you interconnect the equipment, have completed the database population and have loaded discs into your CD player, you can start enjoying your Wintrax® in these and many more exciting new ways.

By the way, you can cheat on the data entry, by entering only the one hundred discs that will be on-line (or fifty in the case of the fifty disc players). Then as you swap out discs or find the time you can complete the data entry. You can also remove and add one or more discs at a time without effecting your entire operation. Removing the disc from the player does not mean you have to retype the data if you put it back in. You just tell the software that you have replaced the disc in whatever player and tray you put it in.

Another way of curving the Data Entry problem, if you have access to the Internet and a PC with a CD-ROM drive installed, is to use the "CD Wizzard" that comes and installs with Wintrax. You can find a link to it on both our web site, and the CDDDB web site. The CDDDB web site is at [www.cddb.com](http://www.cddb.com) and has a database of over 500,000 CD albums as of December 2000. "CD Wizzard" can tap in and download the data by simply placing the CD into your CD-ROM player.

Subsequently, Wintrax can import the data that has been captured using this method. The "CD Wizzard" program is a shareware program that provides a great service, therefore, we recommend you pay the nominal registration fee to the support programmer's effort if you find it of value. See the document information on how to use "CD Wizzard" to import data into Wintrax later in this manual.

Since the CDDDB database is a private database and Wintrax is a commercial product, we are not allowed to write direct support for it into our software due to guidelines set forth by CDDDB Inc. CD Wizzard as a shareware program however meets the requirements, and is therefore included with Wintrax.

## ***Installation/Setup Instructions***

This software was designed for Super VGA monitors that allow **640x480x256** colors mode, or **800x600x256** colors mode. Other modes **may not work**, or may even cause the program to operate erratically or erroneously. If you plan to modulate your VGA monitor signal to your TV set using a VGA-to-NTSC converter, you should run the software in 640 x 480 x 256 color mode for clearer images.

It is mandatory that your system have a Pentium CPU running at 75 MHz or faster, at least sixteen megabytes of memory, and that you install the "smartdrv.exe" disk-caching program if using Windows 3.x, or data access could be incredibly slow. Wintrax needs about five megabytes of hard disk space, and more if you plan to scan in your CD album covers. Be sure your Windows® 386 enhanced features have a permanent swap file set at least to the Windows® recommended amount of disk space. The software requires Windows® 3.1, 3.11, 95, or 98. Wintrax will not operate on Windows NT® or Windows 2000, due to restriction on use of the LPT port for this type of application.

Graphics that are used for CD Cover bitmaps (BMP's) should be at least 388 x 388 pixels in size, 256 colors max, and preferably 8-bit. You need only scan in the images at 74-dpi for 640 x 480 mode, and 84-dpi for

800 x 600 mode, since that's the maximum number of pixels available to the screen per inch. We recommend the 84-dpi, in case you run the software in 800 x 600 mode later. Anything larger is a waste of disk resources, and may cause photo distortion and system sluggishness, but will usually work.

Our web site lists a number of sites where you can find CD cover images. See the link button "CD Cover Artwork" and read the instructions on that page for more details.

Usually when you scan the images in 24-bit mode your software will allow you to convert them to "indexed 8-bit" 256 color images. This conversion saves tons of disk space, while preserving the photo quality, by practical measurements. Using this method, your images will end up being about 150 kilobytes each, or 15 megabytes per 100 images (or CD's). This is not bad when you consider the visual and functional benefits, or the size of current hard-drives.

If your scan software does not convert images to the BMP format, or if you pick up GIF or JPG images from the Internet for use as CD covers, you can find a wonderful shareware program called VUEPRINT on the Internet that will do the conversion job at [www.hamrick.com](http://www.hamrick.com). This is another shareware program that you will find very useful, not only for Wintrax, but for your other photo image needs.

## Software Installation

---

If you downloaded our software demo from the Internet, begin by extracting the files to formatted high-density floppy diskettes. To do this, at your system DOS prompt, or Windows® “Run...” command, with a formatted 1.44 meg floppy disk inserted into you’re a: drive type:

**WT\_xxxA.EXE A:** (ENTER)

When it completes, label the floppy “Wintrax Disk #1” and insert another formatted 1.44 megabyte floppy disk and type:

**WT\_xxxB.EXE A:** (ENTER)

Label this disk “Wintrax Disk #2”. And so-on for each disk in the set. That way you will have a backup, should your program files become corrupt or get accidentally deleted.

You may have to provide a path to where the WT\_xxxA.EXE files are, like: “C:\TEMP\WT\_xxxA.EXE A:”

Some “updates” will have a “U” after them: WT\_xxxU.EXE A: (ENTER)

**Note:** Check the download page to be sure you may use the Update file to upgrade with. Sometimes we add components which require you to do a full install. Full Installs DO NOT overwrite your Wintrax CD database.

Label this disk “Wintrax Update Vx.x.x” or similar. Just be sure to date it and put the version number, so you’ll know how old it is later on, should you have to dig it out and use it again.

Be sure that all programs are terminated on your computer. First on your Task Bar, you can **right-click** on items in the "System Tray" and selected EXIT or CLOSE. You can then check for other items running by pressing the CTRL-ALT-DEL keys all at once. A "Close Program" dialog box will appear. Click on each program and select "End Task". Sometimes you have to do that twice for some tasks. Terminate all programs except "Explorer" and "Systray". Now you are ready to install.

Once the files have been extracted and written to the floppy disks, use your Windows® “Run...” command to execute the file “SETUP.EXE” on the first floppy diskette. During the installation you will be prompted for the additional diskettes. Save these diskettes in case you ever need to reinstall the program at some later time. You might want to set the sliding the write protect tab, to protect the disk should someone try to write to them.

You can extract the all the files into a temporary directory and run the setup program from there, but you may want to be sure you get a copy onto diskette, and then delete the files from your hard drive later to recover the space.

- 1) Shut down ALL background tasks (see paragraph above or below if you need help on that).
- 2) Insert the first of the three install diskettes into you’re A: or B: drive.
- 3) From the Windows START button, select "Run..."
- 4) In the "OPEN:" dialog box type "A:SETUP.EXE" (or B:SETUP.EXE) (without the quotes of course)
- 5) Change the diskettes when prompted to do so.
- 6) Reboot afterward.

Some diskettes may copy few or no files in. This means the files on that diskette have already been installed on your system by some other program in the past and were found in the Windows registry.

When you run the “SETUP.EXE” the software will begin installing. For the best results allow the software to install to the default directories and settings. Depending on your system, sometimes the install may go fairly

fast and may not even ask for the extra diskettes or may skip a diskette. This usually happens if the system files that Wintrax uses are already present on your system.

If you downloaded the installation files from the Internet and get errors during installation, download the files again and try installing again, before calling for support. Since the files are large, it is sometimes hard to get a good clean download. Usually though, if the files are corrupt, they will not extract.

### ***Using the sample data***

If you would like to use the Wintrax sample music data, then after the installation has completed and BEFORE running Wintrax for the first time, find and run the self-extracting WTSAMPLE.EXE file found in your C:\Wintrax directory. This file has about 100 records in it, and will allow you to test drive Wintrax. Please be aware that the software will not actually control players unless a valid registration code is input in the Wintrax setup.

**REMOVING THE SAMPLE DATA:** To remove the sample data before you begin adding your own actual data, just delete these files: WINTRAX.DTA, WINTRAX.ALB, WINTRAX.ART, WINTRAX.TRY, WINTRAX.MEM, and WINTRAX.SNG.

### ***Errors and problems during installation or upgrades***

Recently, with the many changes in the Windows operation system, we've had a few problems that have put a kink to our once simple installation procedures. Please review this document before installing, just in case you encounter one of the problems.

Should you receive an error during the initial installation or full upgrade, it is due to a problem with InstallShield not reporting back the correct error.

To resolve the problem: Terminate all background tasks except for **SYSTRAY** and **EXPLORER**. Again, to do this, Win95/98 users press **CTRL-ALT-DEL** "ONCE" only, select **END TASK** for each task except those two. Then begin the installation again. If you still are having problems, the check the error message **DETAILS** button to see where the error is coming from. If it is InstallShield, then you still have some tasks running in the background. Rebooting the PC after the install, will reactivate any tasks that you ended and all should be fine after that.

#### **If you receive an error reporting "**Runtime Error 453, Specified function not found.**"**

This problem is caused by the installation not updating the Windows registry properly. Usually this is caused by an aborted installation, as mentioned above. To resolve the problem:

1. Go to the Windows **START** button, and select "Programs", then select "MSDOS Prompt".
2. Then at the C:\WINDOWS> prompt type:  
**DEL C:\WINDOWS\PIO\_DLL.DLL** (press ENTER).  
It should report back that one file has been deleted.
3. Then at the C:\WINDOWS> prompt type:  
**DEL C:\WINDOWS\PSR\_DLL.DLL** (press ENTER).  
It should report back that one file has been deleted.
4. Then at the C:\WINDOWS> prompt to return back to WINDOWS type: **EXIT** (press ENTER)
5. Now re-install WINTRAX. There is no need to UNINSTALL it. All should be fine now.

Once the program is installed and after you've read the manual, you should run "Wintrax" from the new icon that was created during the installation. If you installed the sample data, the first thing you must do is go to setup and be sure that PLAYER 1 is activated. Next, from the Main Screen, select REINDEX. This sorts the data and creates the index files needed for Artist, Album, and Song searches.

Wintrax was NOT designed to look like a computer program, but more like a colorful jukebox, to make it less intimidating and more user friendly. The program first shows a "logo" screen which tells the software version, registration name, registration code, and other information such as Wintek Software Company's address and phone numbers, Internet address, etc.

If you get a registration demo mode notice right after the logo screen, then you may not have registered the software in the setup screen, or may have not registered the software with the correct name and codes.

If you are a "Home Jukebox®" user, you can choose to import your current data from your Home Jukebox database in your Home Jukebox directory. Select "File", then "Jukelib Library Import" if you would like to import the data. If not, you may import the data later from the Wintrax File menu.

Now that the program is up, first select "File", then "Preferences Setup". Enter the registration name and registration code given to you by Wintek. **Your registration codes usually appears on your invoice below the BILLING and SHIPPING addresses.** Activate the number of changers you have and select the type of players you have. This is fairly simple since you just select the BRAND (Sony or Pioneer) and the correct number of discs in each player. This usually is 100/101/200/300 or 400.

#### Special Consideration for the Pioneer® AD-PD1 Three-Player Controller

If you will be using Pioneers® AD-PD1 controller (now discontinued), put 300 discs for player 1, and do not select any other players. Wintrax and the AD-PD1 both will see all three of the players connected to AD-PD1 as a single player with 300 discs. Therefore, when doing data entry, you will use disc numbers 1 to 100 for player one, 101 to 200 for player two, and 201 to 300 for player three, in the disc field even though you will ALWAYS use the digit "1" in the player number field. You can only use one AD-PD1. This means you can only have three players, if you use the AD-PD1. There is no advantage to using the AD-PD1 other than its audio mixing ability. More on audio mixing for multiple players later.

To use AD-PD1, hook the player 1 cables to the Control In and Synchro of the AD-PD1. On all CD's set them to PLAYER 1 and use disc numbers 1 to 300. On the Tray Maintenance, they will still show as 3 players.

If you were a "WinJukebox®" user, you will need to import your data using our DOS utility, "WCONVERT.EXE", which can be found in your "WINTRAX" directory after completing the setup. The WCONVERT program also allows you to import pipe delimited ASCII data created by other programs also. If you did not keep your WinJukebox program updated, you may not be able to import your data. If you were a "Home Jukebox®" user and you have "scenes" you'd like to import, you may run the DOS application "RQF2PLY.EXE", which can be found in your "C:\WINTRAX" directory after completing the setup, and is also available at our web site download area in the self-extracting file "WTUTILS.EXE".

## Updates to your Wintrax Software

Updates are usually found on our Internet site at [www.cdcontrol.com](http://www.cdcontrol.com), in the form of self-extracting executable zip files such as "WT\_xxxA.EXE" for disk 1, "WT\_xxxB.EXE" for disk 2, and so on. You should **"always backup"** your current version before adding updates. Unzip the update by executing them into a temporary directory. Then read the WTNOTES.TXT and/or README.TXT, and other text files (files with the .TXT extension) for instructions for updating.

If you don't backup your system, at least create a new folder or directory called WTBACKUP and copy all the files in the WINTRAX folder to that directory. You can't be too safe!

Usually updates will use "InstallShield" program, which will automatically guide your update. Occasionally you may find a new VBX, OCX, or DLL library file that needs to be installed to your Windows System directory. If the setup program does not do it for you automatically, the WTNOTES.TXT or README.TXT

file(s) will instruct you how to install them. They will also point out any changes that may need to be made to your WINTRAX.INI setup file, which resides in the Wintrax directory.

**Note:** Users receiving an error saying something about ALBUM.BMP or JUKEBOX.BMP is missing should edit your WINTRAX.INI file to change:

"ImagesPath=D:\IMAGES" to "ImagesPath = C:\WINTRAX\IMAGES"  
(or where ever your images are stored).

### **Please terminate all programs before installing Wintrax:**

You must terminate all programs before installing Wintrax. You can restart them afterwards. Should you receive errors during the initial install read the "Newsletter" on our web site. It suggests how to handle recent errors that occur when installing. It also tells you how to terminate your background tasks, should you need instructions on that process.

### ***Installing WINTRAX to a drive other than C:***

If you'd like Wintrax to reside on another drive other than C:, you must first install it to drive C:. The using Windows Explorer, you may CUT and PASTE the "Wintrax" and "CDWiz" folders to another drive such as drive D:

Afterwards you must edit the Wintrax.INI file, located in the Wintrax folder. You must change these variables.

```
[Paths]
DataPath=d:\wintrax
ImagesPath=d:\images
WavePath=d:\wintrax\wave
PlayListPath=d:\wintrax\playlist
```

Add these variables:

```
[Web]
CDDbPath=d:\cdwiz\cdw.exe
CDDbName=CDDb Program
```

Next, you must go to the Wintrax programs folder and right click on each ICON and change the target drive letter from C: to D: Also, you should go to your start bar, go to programs, and find the Wintrax shortcuts there. You can also right click on each and edit the Properties to change the drive letters.

## Preferences Setup

---

Clicking on the small jukebox icon on the top left of the main screen under the current song title or pressing Ctrl-F12 will take you to this setup screen.

### **Basic setup**

#### **1. Enter registration information**

**Registration Name** – Enter the name as shown on your invoice or registration documents. Use upper- and lower-case. We usually don't use middle initials, but the first and last name given when you ordered.

**Registration Code** – Enter the code as shown on your invoice or registration documents. Use upper- and lower-case.

**Note:** Should you lose your registration information, check the floppy disk label, software invoice, call, or e-mail Wintek Software Company for help. We keep a database of all registered users. If your name and code do not work, call or e-mail us immediately. It's a good idea to write the registration information on the warranty form in the back of this manual.

#### **2. Activate and connect the players**

Place a check mark by the number of each player that you have connected, and then select the number of discs each player can handle using the combo list box. If you have PD-F type deck, then select the choice that best matches your player, unless otherwise specified. For the Pioneer AD-PD1 three-player controller, you should select "Pioneer 300/301". You can mix and match Sony and Pioneer players. You may need to modify the cables however. See the cable instructions later in this manual for that information. You **must** install at least **one** player, even if you are going to be running in DEMO mode, or no data will be available to work with. You must also add at least eighteen albums of data, then reindex, for the system to operate properly. Sample data is available at our Web site, and as mentioned earlier, in your Wintrax directory (WTSAMPLE.EXE). If you use the sample data be sure to reindex it before trying to play with the software. Reindexing allows the database indexes to "sync" with changes in the main database, or changes that may have been implemented in the software or changes that you make in the Database Maintenance area of the software.

You should connect one control connection to each changer. The cables are marked 1 and 2, or 1, 2, 3, and 4. Be sure to connect the ground for Pioneer® brand changers. If you have more than one Sony® brand changer, connect a cable to each changer. In Wintrax select "Sony 200/300/400 (Sw-1)" and set the CD Switch on the back of each changer to CD-1.

You can connect three Sony® brand changers to just one control input, but it is not recommended. This is sometimes desired so as to be able to control the changers from the remote control. To do this set the first changer in Wintrax to "Sony 200/300/400 (Sw-1)" and set the changer's CD switch to CD-1. On the second changer set Wintrax to "Sony 200/300/400 (Sw-2)" and set the changer's CD switch to CD-2. On the third changer set Wintrax to "Sony 200/300/400 (Sw-3)" and set the changer's CD switch to CD-3. Daisy chain the S-Link/Control-A1 signals from changer 1 to 2, 2 to 3. You will not be able to use the other connections on the Wintrax cable.

**Installation Tip:** When using some of the newer printer ports, especially the ones that are build in to the PC Pentium type motherboards, be sure to set the LPT port mode for SPP, or standard mode, instead of the default EPP or ECP (extended mode). Wintrax will not work correctly if the LPT port is not set to "standard mode". This setting is usually handled in your PC's hardware BIOS setup. **Consult your motherboard manual for how to change the setting in the system BIOS.**

### 3. Review and setup the music categories

Double click on any category entry you wish to change. Type over the existing category names with the category name you'd like to add or create. There are 16 separate music categories.

A category is actually a style of music such as "Rock N Roll", "Country", "Jazz", "Religious", "Children's", "Classical", "Polka", and others. The software comes with some sample categories already setup. To avoid lots of work later, setup your categories before you begin adding all your albums.

By default the software automatically selects category 1 for newly added albums, so you should consider naming that category the category that most of your music is, be it Rock, Country, Jazz, etc. You can get creative and make more setting some categories as a year or tempo. Then you can set any given song to a style, year range, and tempo, which helps build very well behaved automatic play lists. For instance you could set categories like this:

Rock	Soundtrack	80's
Country	Children	70's
Classical	Hard/Fast	50-60's
Jazz	Medium	Solid Gold.
Big-Band	Soft/Slow	
Seasonal	90's	

Then any song could belong to multiple categories, like: Rock, Soft, 90's. Later you will learn how to select songs and albums to construct play lists using various combinations of these categories as filters.

### 4. Review and setup user names

Double click on any user name you wish to change. Type over the existing user name. There are up to eight users. You might consider leaving the first user named "All", so you can make all songs available if the need be. By creating "filters" later, and reindexing the song database, you can filter out all songs that are not affiliated with the selected "category" or "user". This helps expedite music selection by removing the songs that are not favorites of that user, or in the selected categories.

### 5. Select the player control address

If you are using the special cable for Pioneer®/Sony® player only, then usually it will be either 378, 278, or 3BC hex. Usually 378 hex is for LPT1, 278 hex is for LPT2, and 3BC hex is for LPT3. If you are unsure, run the **CHECKLPT.COM** program found in your Wintrax Directory. **CHECKLPT** can also help you troubleshoot your cables. Use "**CHECKLPT /0**" and the program will come up in "polled" mode. Pressing ESCAPE will terminate the program. Contact Wintek support if you have any questions regarding the program or port problems. The program will show you if you are receiving proper signals from the players. The "INPUT BITS" status should change as you press PLAY and STOP for each player. Bit 1 is for player 1, bit 2 for player 2, and so on. Bit 5 is not used. Problems with the lack of proper communication can usually be diagnosed with this program, and bad readings here are a sign of cable or port problems. Remember the LPT PORT must be set to SPP mode (standard printer port) either at system BIOS or on the printer port card.

**PnP LPT Cards:** If your second LPT card is a PnP (Plug 'n Play) LPT card that uses non-conventional LPT addresses, and your Wintrax software version is 1.4.7 or higher, you must edit your Wintrax.INI to set the port address. First find what address your LPT port is at. Right click on My Computer (in Win95/98 desktop) and select Properties. Then select the Device Manager Tab and look for "Ports (Com and LPT)". Double click on the that heading and then look for "ECP Printer Port LPT2" or something similar. Double click on it. Next select the "Resources" tab. Finally, find the FIRST Input/Output Address range listed. It may be something like "0378-037F", but is likely NOT that particular number. Write down the first number which indicated the starting address that the port is at, for instance "0378".

Now edit your Wintrax.INI file in the Wintrax folder. Add or change the following two variables in to your Wintrax.INI file. If the section "[LPT]" is not there add it. Then add the LPT3 variable and contents, as shown here:

```
[LPT]
LPT3=778      (or whatever address you got in the above PnP step.
```

Save the INI file and exit. Next restart Wintrax and go to Setup. Under the Player Control section select the Control port address, which will be listed under the first two as LPT Port 778 (or whatever address).

**When using this method the CHECKLPT.COM and CDSSEND.EXE programs will not work.**

**CHECKLPT.COM** - This program, included with Wintrax, allows you to find the addresses of your LPT ports, and to test your EOM connections. After connecting your cables, run CHECKLPT.COM from your DOS or Windows RUN prompt, using the switch /0. Example: CHECKLPT /0. This puts the program in polling mode. You will see your LPT addresses, some address values, and "input bits". With your players connected, press PLAY on player 1. Input Bit 1 should go away. Press STOP and it should return. Do this for players 2 through 4 if you have them. CheckLPT only works on standard LPT addresses for LPT ports configured for addresses 378, 278, and 3BC and IRQ's 5 or 7. I does not work for PnP ports.

**CDSSEND.EXE** - This program allows you to test the SR control of your players. **CDSend only works on Pioneer® brand changers.** From your DOS or Windows RUN prompt, use the following command and switches to send a cue command to each player to test the control connections:

```
CDSSEND /LPT1 /P1 /M0 /A2
```

Off course, use /LPT2 if you use that port for control. /P? represents the player to test. The player should cue up to disc 2, track 11. Issue "CDSSEND /?" for other commands, if you wish to play with the program. The program will only cue up disc 2 track 11 in test mode, so don't bother trying to send various magazine, disc, or track commands. BUT you can issue play, pause, stop, power commands, etc.

If the program fails to control your players, check your ground from the LPT cable to the players. It should be on a bare screw, around the center of the back of the player. ALSO, the audio connections must be made for players 2, 3, and 4, for the ground to make it to each player. (Or you can add ground jumpers from player 1, for test purposes. You shouldn't use these once you're connected, or you may get a "ground loop" hum in your audio. CheckLPT only works on standard LPT addresses for LPT ports configured for addresses 378, 278, and 3BC and IRQ's 5 or 7. I does not work for PnP ports.

If you are using a PSR-4 or PSR-8 Serial CD Controller from Wintek, select Comport 1 to Comport 4. If your mouse is on Comport 1, you should put the PSR on Comport 2 or Comport 4. If your mouse is on Comport 2 then put the PSR on Comport 1 or Comport 3.

The odd and even ports share what's known to the system as interrupts. Since a mouse creates constant interruptions to the system your PSR will not work property if it has to share the same interrupt lines. If you cannot get the software to come up because you selected a wrong port number, delete the WINTRAX.CFG file in the Wintrax directory, and go to "Setup" to reset the player and port selections (or restore the file from a backup).

## 5. Set player song end and cue options

**End-On-EOM** – If this option is selected, when the current playing song's "End-Of-Message" signal is received from the player, then next song will begin. The EOM (another radio term) typically comes after the song has ended for a second or so, so rarely will you hear an overlap if only this mode is selected, unless you forcibly shorten songs lengths. Only the Pioneer® players have the ability to sense the EOM and pass it on to our software. This option is not available on Sony® players at this time, but may be in the future. Times must be entered for all songs that are to be played when using Sony® players or if not using the EOM feature on Pioneer® changers.

**End-On-Time** – With this option is selected, if the song has a time entered, when the counter counts down to “00:00” the next song will begin. If the song is on an alternate player and Pre-Cue is selected, then the two songs usually overlap like you hear on the radio. (This is known as a “segue”).

**Note:** If both “End On Time” and “End On EOM” are selected then the next song will begin as soon as one of the two signals from the current song is detected; whichever comes first, of course. If neither mode is selected, then “End On EOM” is assumed automatically.

## 6. Automatic operation settings

These fields allow Wintrax to automatically start and stop playing music at the same time everyday. This comes in handy when Wintrax is used to control background music in restaurants, businesses, music-on-hold, and other such applications.

**"Start At" & "Stop At"** checkboxes - To have Wintrax automatically start you must have a play list loaded, the changers must be on. Check the **"Start At:"** checkbox -, and enter the "Start At:" time. This must be done in 24 hour time notation. For instance: Midnight is 0000, 08:00 AM is 0800, Noon is 1200, 1:12 PM is 1312, 06:30 PM is 1830. It's simple, just remember between 1:00 PM and 11:59 PM to add 12 to the hour (1300 to 2359). The "Start At:" time must be at least one minute after the "Play List Load" time, otherwise the play list will not load until the next day and you could always be one day off on your desired play lists. The "Play List Load" feature is discussed more a few paragraphs below.

If you want Wintrax to automatically stop playing at a certain time, then check the **"Stop At:"** checkbox and enter a time. Use the format mentioned in the above paragraph. You can enter a time LESS than the start time. For instance Start At: 1200 and Stop At: 0100 would start the changers at NOON and stop them at 1 AM. Be sure to leave the ":" colon out of the time when you enter it.

**Note:** You must have the "Auto-Load (Recycle Play List)" checkbox selected also, or the system will stop when the play list runs out of songs.

Players are powered down at the "Stop At:" time to prevent cut down on wear of the changers and CD's. This prevents a CD from staying in CUE for hours and hours. Players are automatically powered up when they are used after the "Start At:" time has been achieved.

**Exit On Stop** - No conditions are observed on EXIT, other than saving the current place (bookmark) in the play list, so you should save any play list modifications so they are not lost on EXIT. Wintrax will not RESTART is you select Exit On Stop, because Wintrax will unload itself from Windows. You can add Wintrax to the Windows Task Scheduler in your system tray to have it reload at a specific time. Be sure you load it a few minutes before time for play lists lists to load as described next and before the Wintrax "Start At:" time.

**Play List Load** - Wintrax has the ability to automatically load a new play list each day by itself. This feature allows for unattended operation over a long period of time, such as needed for radio or cable systems. For this to work you must have one or more several factors in place. First you must have "Play List Loaded" selected. You must enter a time for the new play list to load. This is between 0000 (midnight) to 2359 (11:59 PM).

Next you must have play lists read to load. There are several options for this. Auto-loading play lists must be named using one of the following conventions.

**By Calendar date** using the format "mmdyy.ply", such as Feb. 12, 2001 would be 021201.ply. Dec. 25, 2001 would be 122501.ply, and so on. Wintrax uses the computer clock to make this decision. Wintrax will use the date in effect at the "Play List Load" time.

**By Weekday** mon.ply, tue.ply, wed.ply, thu.ply, fri.ply, sat.ply, sun.ply

Wintrax first looks for a calendar date play list to load. If a play list by calendar date is not found, then Wintrax then looks for a play list matching the weekday. If no play list is found, it will repeat the current play list. If a play list runs out before it is time to reload a new play list then the old play list is restarted and used

until the "Load Play List" time is reached unless "Auto Load" is not selected; in which case Wintrax will just stop because you have not left it any valid instructions.

## ***Additional settings that you may want to change***

### **1. Play List Control**

**Auto Shuffle** – If this option is checked, the current play list will be “shuffled” after the play list has been completely played and before it begins to play again. “Shuffling” is the same as randomizing the songs, so the play lists never sound the same twice. When auto-shuffling occurs, it does not actually save the new shuffled order to the play list file on your harddrive, unless you select "Save Play List" before exiting Wintrax. Wintrax will not warn you unless you also applied manual changes to that play list.

***Little known fact:*** *Did you know most radio station formats only use a library of about 800 to 1000 songs repetitively? By mixing them up and not letting songs repeat within a short period of time, or play next to the song that it played next to last time, and by inserting commercials, news, and talk, it sounds like they have an never-ending supply of music.*

*That's actually only about 66-to-88 hours of music, or almost 3-to-4 days worth, if they never repeated one song for that period of time. This assumption is based on the average song length of 4 to 5 minutes per song.*

**Auto Load (Recycle Play List)** – If this option is checked, the current play list will be automatically reloaded after the play list has been completely played and before it will play again.

**Randomize** – If this option is selected, each time a song is selected, it will be thrown into the play list in a random position. This prevents all new songs added from being placed at the bottom of the play list. With this feature disabled, all songs are placed at the end of the list as they are selected.

**Allow CD Repeats** – This option determines if the same song on a CD can be added to a play list more than once. In the case of wave files, on Wintrax Pro, wave files are allowed to be loaded more than once regardless of this setting.

**Wave Active** – Disabling this selection will cause Wintrax to ignore any wave files that are encountered in a play list. To activate this option, you must have the line: “SOUND=WAVE” under the “[General]” heading of your Wintrax.INI file, and the option selected on the setup screen.

### **2. Startup and shutdown options**

**Auto Power-Off** – With this option is checked, the players will power down after the current play list has been played completely. This option overrides the Auto Load feature.

**Startup Load** – This option determines whether the default play list is loaded when the program is started. If so it will be adjusted to begin at the point where it left off, assuming the program was shut down properly in the prior session. Before pressing PLAY (F5), you can move the play list highlight bar to a new position, if you wish to start somewhere else.

### **3. Advanced player controls**

**Pre-Cue** – If this option is checked, the software will attempt to “cue”, that is “get ready”, the next song while a song is playing on another player. “Cue”, a radio term, is the act of getting something ready, and “Queue”, the English computer term, is the place where something sits when it is ready. This option relies on “player separation” in order to work smoothly. It cannot “Pre-Cue” songs that are on the same player. (If you are using the AD-PD1 three-player controller from Pioneer®, do not select this option. The AD-PD1 sees its’ players as one player with 300 discs). If the next song is on the same player, the software will wait until the current song is over, then cue and play the next song. If this option is not selected, then no songs are pre-cued, and each song is cued just prior to playing. This is most obvious if you only have one CD jukebox player. When a song is cued that is either the first song, or a song that is back-to-back from the same player, usually 10 seconds is added to time (see next option) to allow for cue time. This usually prevents the song from being ejected from the player before the real ending.

**Cue Fudge (1<sup>st</sup> or back-to-back songs)** – This setting determines the number of seconds added to the time on a song that is the first song played, or a song that starts on the same player as the previous song. This time add-on is required sometimes to keep a song from ending too soon, since on back-to-back plays from the same player, sometimes may take 10-12 seconds to cue. This setting can be 00 to 99 seconds, but should normally be in the 10-to-15 second range.

#### 4. Miscellaneous settings

**Clock 12/24** – If this option is checked, the clock will display “military time”, such as 14:01:24 instead of 2:01:24 PM.

**ScrnSaver** - Set to "0" to disable. This setting is the number of seconds before Wintrax's album display screen activates. The album display screen shows a large image of the current playing CD's CD cover, the current time, the current song time, the album, artist, and song names, and the player / disc / track information. The screen saver mode cannot be activated during the first 20 seconds of a song start or while the software is not playing music.

**Alternate Program Title** – This option allows you to name your jukebox program. The title at the top of the front screen will be changed to this title whenever the jukebox is in “PLAY” mode. It returns to Wintrax® when you press “STOP”. So, if you get really attached to your music software, you can go ahead and change its’ name to something you like. This is sort of like the naming your “car”, “truck”, or “favorite pet”. Wow, a slight human touch! If you use a wireless FM or TV transmitter to transmit your music and jukebox screens to other rooms, you could put something like “TV3 - 89.7 FM”.

Don’t use ALL capitals because of the TrueType scaleable fonts; you’ll have less room to type a name and it won’t center properly.

#### Completing setup

After you have made the appropriate adjustments in the Setup Screen, select “Ok” to save the settings. If you select “Cancel” then most of the changes will not be saved. When you return to the main screen, select “File”, then “Exit”. You should always exit the program after making changes in the setup, especially after changing the LPT or COM addresses, so that the program can re-initialize using the new data.

Restart the program. If you did not import any data, you will need to go to “Files” then “Database Maintenance” to add some of your CD’s to the system before you can begin playing with the program. Data Entry is described later in this manual. You must have data for at least eighteen CD’s to run Wintrax without errors occurring. **Again, be sure to “reindex” after you enter or correct data.**

**Always restart the program after making changes in the SETUP screen.**

## Main Wintrax Screen



The main screen has many obvious and neat features, as well as a few hidden features. Please read the following descriptions carefully, so you can learn to use your new program to its fullest, and save yourself lots of time and to make using it easier.

Also, be sure to turn on the "button-tips" feature under the "Help" menu selection, to learn the button short cut keys. This way you can learn to use your software to the fullest. Once you are familiar with the features, you can turn the button-tips off again for a cleaner screen.

You can activate keys on most screens in several ways. First by clicking on them with your mouse or trackball, or touch screen. Secondly by using a hot key from your keyboard. Nearly every control on the main screen has a keyboard hot key. These are listed on the Pull-Down menu on the main screen also.

You can access most features on the main screen by using the Pull-Down menu. Just press F10 or the ALT key. Then use your arrow keys to move the menu select bar left and right, up and down. Press the ENTER key to select an option. Labels that have characters "underlined" are also indicators of hotkeys. For instance: "Request" indicates that the "R" key when used with the "Alt" key is a hot-key shortcut. Press and hold "Alt", then press the "R" key.

Some hot-keys are paired with the "Control" or "Shift" key. Other keys may simply be one-touch function keys, like "F1". You can select objects by using the TAB and SHIFT-TAB keys. This moves a dotted "focus" box around the screen to each object. Once an object has the "focus", you can press the ENTER or the SPACEBAR key to activate object or feature.

**Note:** The **PageUp**, **PageDn**, **Up**, **Dn**, **Home**, and **End** keys only work when the grid has the control focus. You give the grid the focus by clicking on the titles at the top, a selection, or by using your **TAB** key. You know the grid has the focus when the column titles have a **RED** background. The grid does not have focus when the column titles have a **GREEN** background. This applies to all grids in Wintrax.

**Title Bar** – On the top program bar which says “Wintrax”, you can select to minimize the entire program so that it can run in the background. Click on the minimized icon on the right side of the screen or double click on the title bar. You can get back to the program by either clicking on the program icon, or by pressing **ALT-TAB** while in another Windows application. While the program is minimized, you can also maximize Wintrax by clicking on the song title or “Wintrax” on your Win95/98 taskbar. The title of the current playing song will be displayed on the taskbar of Windows 95/98, if the program is playing.

**Warning:** Some Windows® programs could require and use a lot of the Windows® system resources. This could cause Wintrax not to operate properly, skip songs, skip digits in disc or track numbers, etc. This is especially true of programs that are using the printer or hard disk extensively. You’ll have to experiment to see what you can or can’t run, while running Wintrax. The PSR-4/8 Controller should be used when the computer acts consistently unreliably. If your system is up to specifications but still skips songs or makes mistakes constantly, be sure your PC is in **TURBO** mode, or check your cable and port settings. Remember, as mentioned in the setup instructions, the port must be set to **SPP** (standard port mode) in your system BIOS.

**Menu Bar** – This bar contains six main menu selections: File, Player, Request, Reindex, Screensave, and Help. Some of these menu selections has sub-menu selections. These will be described below in this document. Pressing the “Alt” or “F10” key will bring this system menu bar into focus. You can then use your arrow keys, mouse, or the indicated hotkeys to make selections of these menu items. Clicking on the titles below with your pointing device will trigger the event as well as the keystroke that is assigned to that feature.

**Version X.XX.XX** – (**SHIFT-F1**) -- Clicking on the version number will show you the current software version, and more extended information such as our address and phone numbers, your program registration information, our Internet and e-mail address, etc. This is the “About Screen”. You can also access it from the Help sub-menu.

**Wintrax®** -- (**ALT-X**) -- Clicking on the program title or name will execute the EXIT dialog to help you quickly exit the program. You can also exit from the “File” menu. If you set an "Alternate Title" in setup, then that title will appear while Wintrax is in **PLAY** mode.

**Clock** – This is the current time. It can be set in preferences setup to display in regular time format, **HH:MM:SS AM**, or in military format like “13:04:55”.

**Title** – The current playing song title or song that played last, if the system is halted.

**Artist** – The current playing artist name or for the last played song, if the system is halted.

**Player/Disc/Track** – displays the current playing Player, Disc, and Track data.

**Song Time Display** – Shows the remaining or exhausted time for the current song, depending on whether a time will found in the database. If a time has been entered for the song, the counter counts down. If there was no time for the song entered, then the counter counts up. The counter sometimes stops for a few seconds while a new song is being prepared.

**Help** – (**F1**) – Initiates On-line Help File.

**Move Song Up List** – (**F2**) – Moves the currently highlighted song up the list by one song. This option appears also under the Menu Bar under Request.

**Move Song Down List** – (**F3**) – Moves the currently highlighted song down the list by one song. This option appears also under the Menu Bar under Request.

**Manual Direct Control – (F4)** – Selects the Manual Control screen, where you can manually control any player, as if you were using the players' remote control. This option is explained in the section titled "Manual Control". This option appears also under the Menu Bar under Player.

**Play – (F5)** – Starts the play list. If the play list is already running, then clicking on the play button sets the currently highlighted song to be the next song to be played. Double clicking on a song on the play list grid is the same as pressing Play or F5. You cannot change the current song, and in some cases you can't change the second song either. Selecting a new song to play next, should force the players to re-cue, without affecting the current playing song. If the next song is on the same player nothing will happen until the current song ends, otherwise the next song will be cued if the pre-cue option is selected in setup. This option appears also under the Menu Bar under Player.

**Pause – (F6)** – Used to pause the play list. This button is a toggle. It stops the timer, and temporarily pauses the current song. This option appears also under the Menu Bar under Player.

**Eject – (F7)** – Ejects current song and advances to the next song. You should wait a few seconds before pressing this button multiple times, so that the next song has time to cue and start. If the next song is on the same player, it may take 10 seconds for the next song to start. This option appears also under the Menu Bar under Player.

**Stop – (F8)** – Stops the current play list immediately. Sends stop signals to all valid players. This option appears also under the Menu Bar under Player.

**CD Cover – (F9)** – Clicking on the CD Cover takes you to the "Album Search" screen. This option appears also under the Menu Bar under Player. This option appears also under the Menu Bar under Request.

**CD Spine – (Ctrl-F9)** -- Clicking on the CD Spine takes you to the "Database Maintenance" screen for the CD Album of the currently highlighted song. Pressing Ctrl-F9 takes you to the LAST CD record you looked up. This option appears also under the Menu Bar under File.

**Alt Menu – (F10)** – The pull down or activate the menus on the Menu Bar.

**Musical Note Button – (F11)** -- Clicking on the Musical Note takes you to the "Song Search" screen. This option appears also under the Menu Bar under Request.

**Star Button – (F12)** -- Clicking on the Star takes you to the "Artist Search" screen. This option appears also under the Menu Bar under Request.

**Clear Play List – (Ctrl-F2)** – Clears the currently loaded play list from memory and the play list grid. It does not delete the play list, if it has been saved. This option appears also under the Menu Bar under File.

**Save Play List – (Ctrl-F3)** – Save the currently displayed play list. If you reshuffle and player separate a play list, you should also resave it, or the next time it loads it will load in its' original form. If you add songs to a play list, they are not automatically saved to the disc file. Before exiting Wintrax, it is always a good idea to save your play list, in case you have added songs. You are not prompted, because many times you may want to add songs to the request list, but may not want them to become part of the "saved" play lists. This option appears also under the Menu Bar under File.

**Important play list programming note:** Be careful when you save play lists. A few rules apply that can be a double-edge sword. When a play list is loaded it is checked against the players and disc that are currently "on-line". If a player or disc is off-line the cut will not be loaded into the current list. This is fine EXCEPT, if you "Save" the play list to the SAME filename, those inactive songs will be lost.

Instead, if you need to add to the play list, but yet keep the off-line songs, save the play list to a different name. Later when the songs or players are on-line, merge the two play lists (using load).

**Load Play List – (Ctrl-F4)** – This loads a previously saved play list from disk. If a play list is already loaded and displayed, you will be asked if you wish to clear the loaded list first or add the data to the list that is already loaded. Adding the data together does not effect the files on the disk, unless you save the

play list again. When merging two play lists, repeat songs are NOT purged. This option appears also under the Menu Bar under File.

**Auto Play List (Ctrl-A)** - Automatic play list uses the number of songs placed on the Filter Screen. It generates a play list of that number of songs from the current active filter. If no filters are active, it picks from the entire library of songs that are currently online. The maximum number of cuts that can be generated by Auto Play List is 1024 (about three days of music). This option appears also under the Menu Bar under File.

To build a random auto play list using several search filters, set a filter, set the number of songs you want, re-index, then select Auto Play List. Next, change the filter, set the number of songs (if different), and then select Auto Play List again. Songs from the new filter will be added to the previous list. You can do this over-and-over until you have added as many songs as you wish. Remember you normally can only play 16 songs an hour (16 songs x 3:45 minutes each = 60 mins) or about 384 songs for a 24-hour period. Next, parse out songs you don't want in the list. Then shuffle the play list using CTRL-F5, the player separate the play list (CTRL-F6) if you have more than one changer. Finally save the play list. You can now play it; a complete random list, based on your musical taste!

**Shuffle Play List – (Ctrl-F5)** – This randomizes the play list. It should be noted that this feature can be used at any time. ONLY data below the highlight bar will be affected, so be sure you place the highlight bar at the top of the play list, if you wish to randomize the entire play list. You can shuffle while the players are running. This option appears also under the Menu Bar under Request.

**Player Separation – (Ctrl-F6)** – This separates songs so that they are arranged alternately on different players. For instance, if you have four players, after you build a play list, you may see a few or even dozens of songs in the play list grouped together from the on CD player. Selecting this option will allow the software to move songs around so that each song is on an alternate player, like 1, 2, 3, 4, 2, 3, 1, 3, 4, 1, 2, 4, 2, 1, 3, etc. By doing this, the software can PRECUE the next player so that the transition between songs is tighter. Player separation also works just like the above feature, in that ONLY data below the highlight bar will be affected, so be sure you place the highlight bar at the top of the play list, if you wish to separate the entire play list. You can separate while the players are running. This option appears also under the Menu Bar under Request.

**Import ASCII Data (Ctrl-I)** – Import all data in the C:\WINTRAX\WTCDDDB.TXT file, if it exists. See the discussion on CD-Wizzard to more details. Import sets the songs category to the 1<sup>st</sup> category, and the Users to all, as well as “0” to “9” for user levels. This option appears also under the Menu Bar under File.

**Export ASCII Data (Ctrl-X)** - Exports ALL data to c:\wintrax\wintrax.exp, comma-delimited. This option appears also under the Menu Bar under File.

**Note:** Wintrax includes a DOS program, complete with source code, called WCONVERT.EXE and WCONVERT.BAS that allows you to Import/Export several formats. You can even modify the program to meet your needs. Contact Wintek for the latest database file format if you plan to read/write directly to the main Wintrax database file (WINTRAX.DTA). These operations must be followed by a Re-Indexing of the data if changes are made to Wintrax.DTA.

**Backup (BACKUP.BAT) (Ctrl-Z)** – Runs the batch file called BACKUP.BAT. Usually this file will call on PKZIP or some other ZIP program to ZIP and store your Wintrax.DTA, Wintrax.INI, and Wintrax.CFG file to another disk or drive. To create or edit the file, just use a text editor or notepad to create a DOS type batch file. See your DOS manual for an understanding on how batch files operate. This option appears also under the Menu Bar under File.

To use the Backup command on the File Menu, create a batch file called BACKUP.BAT and put it in your Wintrax sub-directory. It should call the backup method you prefer. For instance, if you have pkzip.exe for DOS you could write a batch file that looks like this:

```
<BACKUP.BAT Batch File>
@echo off
cls
```

```

echo Backing up Wintrax Data...
c:
cd\wintrax
pkzip a:wtback wintrax.dta
pkzip a:wtback wintrax.ini
pkzip a:wtback wintrax.cfg
pkzip a:wtback wintrax.mem
echo Backup Complete!
echo Press any key to continue.
pause > nul

```

**External Hook (HOOK.BAT) (Ctrl-E)** – Runs the batch file c:\wintrax\hook.bat. This file, just like the BACKUP.BAT file mentioned above can call on any program or function. This file can be used to display notes, manuals, or whatever you wish. This option appears also under the Menu Bar under File.

```

<Hook.BAT Batch File>
@echo off
cls
edit c:\wintrax\wtnotes.txt

```

**JUKELIB Library Import (Ctrl-J)** – Imports “Home Jukebox”® data, or the data file created by the Wintek JUKELIB program. JUKELIB is our 8,000 CD title database that helps you get your startup data prepared. The file that is imported must be named “JUKEBOX.DTA” and must be in the sub-directory C:\JUKEBOX. Once you have imported the data, be sure you do not “re-import” it again. It might be advised that you delete the file “JUKEBOX.DTA” if you will not need it again. If you are using JUKELIB and want to import more album titles later, delete JUKEBOX.DTA before searching for your new albums.

DO NOT DELETE JUKEBOX.DTA if you will be using our DOS program “Home Jukebox”. That is the main database that HJ uses. This option appears also under the Menu Bar under File.

**Play List Lines 1/2 (Alt-1 or Alt-2)** – Sets the play list grid to single or double rows, to make the titles more touchable or readable. This option appears also under the Menu Bar under Request.

**Search List Lines 1/2** – Sets the search list grid to single or double rows, to make the titles more touchable or readable. If you have the Search Screen activated, you can use Alt-1 or Alt-2 while in that screen to change the setting. This option appears also under the Menu Bar under File.

**Password Lock (Ctrl-F1)** – If passwords are setup for the system, then this option will lock the system, requiring passwords to be used. If passwords have been used already to unlock various functions, this selection will LOCK those options again. This option appears also under the Menu Bar under Help.

**Password Unlock** – Unlocks the entire system, if password locking is in use. You must use the master password for this option. This option appears also under the Menu Bar under Help.

**Home – (Ctrl-F7 or “Home” Key)** – Resets the play list to the current song at the top of the list. This option appears also under the Menu Bar under Player.

**Tray Maintenance – (Ctrl-F11)** – Pops up the Tray Maintenance Screen, which shows where CD’s are located (Player and Disc trays). This option appears also under the Menu Bar under File.

**Jukebox Icon – (Ctrl-F12)** -- Clicking here takes you immediately to Preferences Setup. Preferences can also be selected from the “File” menu.

**Reindex – (Alt-D)** - This option reindexes the main database, so that changes are added to the search screens. Anytime you change any data in the Database Maintenance screens, you should reindex the data, so that the changes will show up. Some data stored in the Artist, Album, and Song search screens are stored in their index files, and unless re-indexing occurs, that data is not updated. This option appears also under the Menu Bar under ReIndex.

**Page Up Arrow – (Page Up)** – Scrolls the play list upward by one page (7 or 13 items). If the Play List grid has the focus, then you can use your PAGEUP key on your keyboard.

**Page Down Arrow – (Page Down)** – Scrolls the play list downward by one page (7 or 13 items). If the Play List grid has the focus, then you can use your PAGEDN key on your keyboard.

**Up or Dn Arrow – (Up/Dn)** – Scrolls the play list up or down by one song. If focus is not on the grid at the time you press the arrow key, you may have to press it twice. Pressing an arrow key turns focus back to the grid, then allows you to scroll it. If the Play List grid has the focus, then you can use your UP and DN arrow keys on your keyboard.

**Red/Green/Yellow/Black/Gray Dots** – These dots represent the status of the first eight players. Red equals STOP, Green equals PLAYING, Yellow equals cued and ready next, and Black equals EOM just received. Gray indicates that the player is not active, that is, it is not selected in the Preferences screen.

#### **Info under the bottom of the Play List grid**

**Play List Title** – Double clicking on the title “Play List” will reset the grid to its normal state. This is handy if you accidentally move the fields around or squish friend down and can’t access them.

**Total Time** – This is an estimated time reference of how much time it will take to play the playlist from the current song to the last song, before recycling or restarting.

**Req Songs** – The number of songs left to play from the current request to the last song.

Sometimes between these two labels you may see a yellow colored play list name, such as “rock” or something else you may have named a play list. This is the name of the current or last used play list. If it is “...” then the current play list is new and has not been saved set. To save a play list, see the Menu Bar commands.

### **Passwords**

To activate Password Protection, in the WINTRAX.INI file, under the section [Password], there are six variables:

[Password]

Active=0

Main=NULL

Edit=NULL

Exit= NULL

Setup=NULL

AddSong= NULL

RemoveSong= NULL

Set these to the passwords you want to use, or the word "NULL" if you don't want to check the password for that item. They can be different or the same. Then set "Active=1" to turn checking on or "Active=0" to disable it. Inside the program, once you've used the correct password for a particular section, it does not prompt you for it again. So to secure the system either exit and re-enter the program or pull down the HELP menu and select PASSWORD LOCK. That re-establishes the security.

### **Play List Grid**

When you click on the play list grid, the grids title bar changes from green to red, to show that the grid has the focus. You can then use the up/down/end/home/page up/page down keys to manipulate the grid if the grid has the current focus.

Grids columns can be resized and moved. Click and hold a vertical bar and drag it left or right. You can drag the column titles around and rearrange them also. If you collapse a column completely, it can be regained by double clicking on the “grid title”, such as “Play List”. If you cannot regain the column, then go into the “WINTRAX.INI” and delete the entries for the particular grid that you need to reset.

By using the **Up** and **Down** arrows to the left of the grid, you can change the highlighted item, or you can single click on a line to highlight an item.

Once an item is highlighted, it can be moved up a line at a time, by pressing **F2**. Pressing **F3** allows you to move the highlighted item down a line at a time.

Pressing the **DELETE** key allows you to remove a song from the play list. You will be asked again by a **WARNING** dialog box, if you are sure you want to delete the highlighted song.

Double Clicking on a grid item either starts the item playing, or if something is already playing, it sets the bookmark for the next song to play. If the song is on an alternate player, then the song will be pre-cued, if the pre-cueing option is selected. If the item is the current playing item, the song will repeat once.

Pressing **ALT-1** or **ALT-2** can change the play list grid size height to 1 or 2 lines. This is handy if you are using a touch screen. It changes the grid rows from single to double size and vise-versa.

**The column title abbreviations are:**

P = Player, D = Disc, T = Track, Title = Song Title, Artist = Song Artist, and Time = Song Time.

## Album Search Screen



By clicking on the CD Cover on the main screen, or by pressing the F9 key, you are taken to the Album Search Screen. This screen shows eight album covers at a time, complete with Title and Artist. You can jump around within the database by clicking on the ALPHABET table at the top of the screen, or by pressing a letter on the keyboard. If no artist is found for that letter of the alphabet, then the next higher letter is shown. You can also use the PREV, NEXT, TOP, and advance arrows “<<” and “>>”. Once you see the album that you wish to select from, click on the album cover, or press the letter “1” through “8” (or F1 through F8).

You may be able to see the digits “1” to “8” in the bottom left corner of each CD’s artwork. Clicking on the album cover will open up another screen called the “Album Song Selects Screen” shown on the next page in this manual, that will let you pick any individual songs you may wish from that album.

Only albums that are loaded will be displayed unless you reindex the data with the filter of “Show Only Loaded Albums” unchecked. Clicking on an unloaded album will have no effect.

Click CLOSE, press Alt-C, or press ESC to return to the main menu.

## Album Songs Select Screen



As mentioned on the previous page, if you press F9 at the main screen, or click on the album image (sometimes it may be the "No CD Image" bitmap), you will be presented with a screen with eight albums on it as shown above. By clicking on an album cover from the "Album Search Screen" or pressing a number "1" to "8" (or F1 to F8) from that screen, you are presented with this screen, the "Album Songs Select" screen. It shows the album artwork on the left side of the screen. On the right side are the songs in the album. If more than 16 songs are on the album, the "Show More Songs" button becomes enabled (bottom of the screen in the middle).

By double clicking a song, or by clicking on the ADD button, it can be added to the play list. If the album or song is not on-line OR has already been selected, you will be warned. If the song is accepted, then it is added to the play list. A screen will pop up for two seconds notifying that the song has been added.

If you have "Allow CD Repeats" selected in the "Preference Setup" options, then if the song is already in the play list, you can add it again by selecting the "Ok" button.

Pressing **CLOSE (Alt-C)** or ESC will return you to the "Album Search Screen".

Pressing **ADD (Alt-A)** the currently highlight song will be added to your play list, if it is not censored or already in the play list. Since this screen represents all songs in an album, it may show songs that you have marked as censored, however it will not allow them to be played. If Randomize is active in Setup, then songs will be added randomly at different spots in the play list. If Randomize is not active, the songs will be added to the end of the play list.

Pressing **ADD ALL (Alt-L)** all songs displayed that are not censored will be added to your play list. Since this screen represents all songs in an album, it may show songs that you have marked as censored, however it

will not allow them to be played. If Randomize is active in Setup, then songs will be added randomly at different spots in the play list. If Randomize is not active, the songs will be added to the end of the play list. Songs that segueway or blend will be cued as a separate song.

Pressing **SHOW MORE SONGS (Alt-M)** you can see additional songs that are on the album. This button may be disabled if no other songs exist on a second grid page.

Clicking on the **EDIT** button, or clicking on the album artwork will take you to “Database Maintenance” for the current selected CD to allow you to view more information or to make changes. Remember, after you make changes, you must re-index the database for the changes to show up in all the different screens.

## Song/Album Search Screens



Pressing the **Musical Note** (or **F11 key**) or **Star** (**F12 key**) from the main screen, you are presented with a search screen that allows you to view the songs or artist alphabetically, depending on the key selected.

This screen is fairly self-explanatory. It has graphical represented cursor keys that allow you to manipulate the screen. It also has a keyboard with all the letters from A to Z. Pressing or clicking on these letters moves you to that area in the grid. Selecting the button titled “**Number**” (**Alt-N**) takes you to the top of the list where the songs or artists beginning with numbers are located.

**Note:** You should be careful when entering data that songs and artist begin with either a number (0 to 9) or letter (A to Z). For instance, for the artists “.38 Special”, you should enter “38 Special” dropping the decimal point. Otherwise the songs will not show up on some select and search lists, and are not indexed.

Selecting “**Album**” (**Alt-A**) allows you to peer into the album for the currently highlight song on the grid. This screen is explained above under “Album Songs Select Screen”.

Clicking on “**Add**” or “**SPACEBAR**” or the “+” button, the currently highlighted song is added to the current play list, if it is online, if it is not censored, and if it is not already on the list. You can add (select) songs by double-clicking them on the “Song Search” grid. If Randomize is active in Setup, then songs will be added randomly at different spots in the play list. If Randomize is not active, the songs will be added to the end of the play list.

If you have just “cleared” a play list, to build a new one, the current bookmark position must be reset to the top of the Play List grid. This is usually done automatically, but occasionally does not for some odd reason. To reset it, double-click on the #1 position in the play list grid, then immediately click “STOP”. This should

keep the system from hanging, if your system should happen to be one of the rare ones that don't always reset the grid.

Clicking on **“Insert”** then the currently highlighted song is inserted at the place where the highlight bar is on the main screen. When inserting, the highlight bar on the Main Screen has to be below the current song for inserting to occur. Just tap the **“Home”** button to find out where the current song is. To change that, double click on another song then press the **STOP** button, if you don't want it to start yet.

You can click on the **“Binocular”** buttons to **“FIND”** or **“REPEAT FIND”** a particular song or artist search.

Pressing **Alt-1** or **Alt-2** will change the grid size for touch screen users to 1 or 2 lines height.

Pressing the **UP** or **DOWN** arrows will immediately turn the focus over to the **“grid”** so that you can scroll for another song. Scroll keys include **“UP”**, **“DOWN”**, **“PGUP”**, **“PGDN”**, **“HOME”**, and **“END”**.

**Note:** The **PageUp**, **PageDn**, **Up**, **Dn**, **Home**, and **End** keys only work when the grid has the control focus. You give the grid the focus by clicking on the titles at the top, a selection, or by using your **TAB** key. You know the grid has the focus when the column titles have a **RED** background. The grid does not have focus when the column titles have a **GREEN** background. This applies to all grids in Wintrax.

If you are using a wireless keyboard or not using a mouse or touch screen, all buttons can be activated by using the **TAB** key to focus on a button, then pressing the **SPACEBAR** to select it.

If you have **“Allow CD Repeats”** selected in the **“Preference Setup”** options, then if the song you select is already in the play list, you can add it again by selecting the **“Ok”** button.

## Find Screen

---



Trivia Quiz: Why would this search fail?

(Because “White Room” was recorded by “Cream”)

**Text Box** – type in information that you wish to find. The fewer letters the broader the search. The more letters, the narrower the search. You could type words in each Text Box to narrow the search also. The search routines search for a match of the letters in the box and a song title or artist. The search can be within a title. For instance if you search for “Transfer”, it would turn up “Manhattan Transfer System”. Upper and lower cases are ignored. Avoid using quotes (“) or special characters.

The search does not adhere to “Internet” or “Sequel” type search criteria. For instance, if you put “beatles + paul”, you would likely come up empty. You would need to put “beatles” on the first search line, and “paul” on the second search line, and of course, click the “or” button and omit the quote signs.

**And/Or** – This option tells the software how to perform the search using the Text Boxes, and whether the data is added or compared for a broad or narrow search.

**Song Title** -- Selects the song title field to be searched for the desired search text.

**Song Artist** -- Selects the song artist field to be searched for the desired search text.

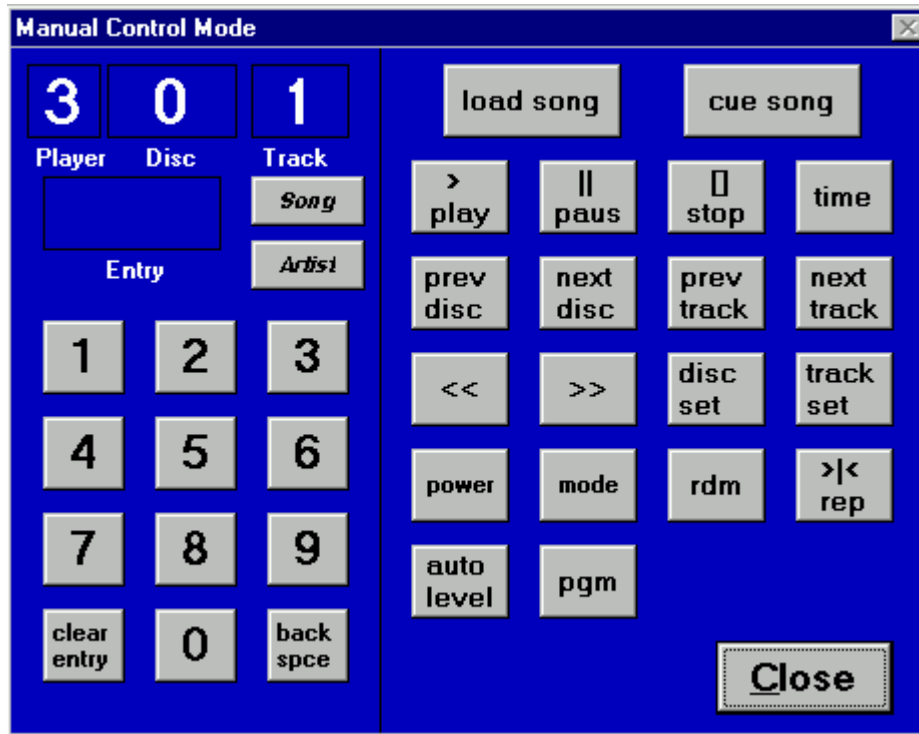
**Ok** – Start the Search

**Cancel** – (or ESC) Abort the Search

Once the search has began you can repeat the search by pressing the Alt-R or “**REPEAT**” button. You can change the search, by selecting the “Find” button again.

## Manual Control Screen

---



On the manual control form, you click on numbers, then click on the player disc or track field above them to move the number into that field.

Manual mode has an ARTIST and SONG button. This pops up the artist or song search screen. You can pick a song, and if the player, disc, and track data will automatically be put into the fields on the Manual Mode screen. Press CUE to cue it. Then press PLAY to let it rip, after it has cued.

Manual mode and Automatic mode cannot be used at the same time. Songs selected manually will not rejoin the play list when they are finished. They simply end.

The manual mode is used mostly for test purposes, although it can be used just like your hand held remote control.

## Database Management Screen

**Data Management**

Catalog#  Year:  Player:  Tray #:   Tracks 33 to 64

Artist:  Album:

**Song Data** (Each track must have music categories and users for it to show up in the search screens.)  Album Bitmap:

Trk	Time	Title	Artist	Year	Control Type	CtrlData	Alt BMP	M
01	04:58	Can't Let Go	Koko Taylor	90	CD Track			
02	05:18	Stop Watching Your Enemies	Koko Taylor	90	CD Track			
03	04:16	Hey Baby	Koko Taylor	90	CD Track			
04	05:50	Tired Of That	Koko Taylor	90	CD Track			
05	04:20	It's A Dirty Job	Koko Taylor	90	CD Track			
06	04:20	Jump For Joy	Koko Taylor	90	CD Track			
07	04:46	Time Will Tell	Koko Taylor	90	CD Track			
08	03:43	Eyes Don't Lie, The	Koko Taylor	90	CD Track			
09	05:27	Fishing Trip	Koko Taylor	90	CD Track			
10	03:53	I Don't Want No Leftovers	Koko Taylor	90	CD Track			

**Music Categories Per Song**

Rock (All)  Dance M/F  Jazz/Classic  Instrumental

90's  Dance Slow  Soundtracks

80's  Country(All)  Childrens

70's  Country M/F  Seasonal

60's  Country Slow  Other/Misc

**Personal Favorites & Ratings Per Song**

All/Any  Brother

Mom  Family

Dad  Guest

Sister  None

**Other Song Settings**

Hide/Censor Song

Changes will show up after you re-index from "Request screen".

Disc Inactive

ID#: **417**

When editing data in the database management screen, you must move to the next field with your TAB key, before the data is accepted. For instance, if you change a player or tray number, you must press TAB to the next field before moving to the next record in the database.

**NOTE:** You must have data for at least EIGHTEEN (18) CD's before you can "test drive" Wintrax. There must be enough data to fill the various screen grids, or the program may respond poorly or do odd things.

**DATA ENTRY SHORTCUT!** -- When entering song data, you do not have to re-type the artist name over-and-over again if the artist name is the same. Enter the artist name for the ALBUM song. On succeeding songs when you get to the artist field just press the SPACEBAR, and then TAB to the next field. The same artist name used in the main artist field will be used.

You may want to use the following trick so that reports are sorted by artist last names, but songs in grids appear by artist first + last name.

Example: Set the album artist name to "Dan Fogelberg". Enter the data for the songs, and use the space + tab technique mentioned about to automatically fill in the artist field. When all tracks have been entered, go back to the album artist name field and change it "Fogelberg, Dan" In album reports and in the album select screen the artist will be listed by last name, as one would expect. But on the song and artist search screens, the name will appear first + last name, as one would expect.

Also, data may be imported into Wintrax using the WCONVERT.EXE program that comes with Wintrax. See the discussion information about "CD Wizzard" also. This program can collect data for CD albums from the Internet. This information is available immediately following our description of the fields used in

database entry. Other information is available on our web site, as well as link to the CD Wizzard web site [www.bfmsoft.com](http://www.bfmsoft.com) site and the CDDB web site at [www.cddb.com](http://www.cddb.com).

**Note:** Anytime data is changed or added to the CD Management screen, then you must re-index the data for it to become available. This is done by going to the Main Screen, selecting the “Request” menu, and then selecting “Re-Index Data”. If your Song, Artist, or Tray Maintenance Screens do not have the data they should, then REINDEX.

**Catalog Number** The album or cd catalog reference number (alphanumeric). This is usually on the spine of the CD. It is not required data. Wintrax does not need this information. If you import data from the “CD Wizzard” program, then the “Index Reference” data will be there.

**Year (Alt-Y)** Year of album copyright. You may use the YYYY or YY format (1995 or 95).

**Player (Alt-L)** Player that album is located in. This number should be between 0 (off-line) and 8, except for wave files would should have a “9” in the player field.

**Tray # (Alt-T)** Tray number that album is located in. This number should be between 0 and 100.

**Tracks 33 to 64 (Alt-K)** If album starts at track 33 (for albums with LOTS of tracks). If an album has more than 32 tracks, create another record and check the “Tracks 33 to 64” checkbox. Then enter the data for that album. Use the same player and tray # however.

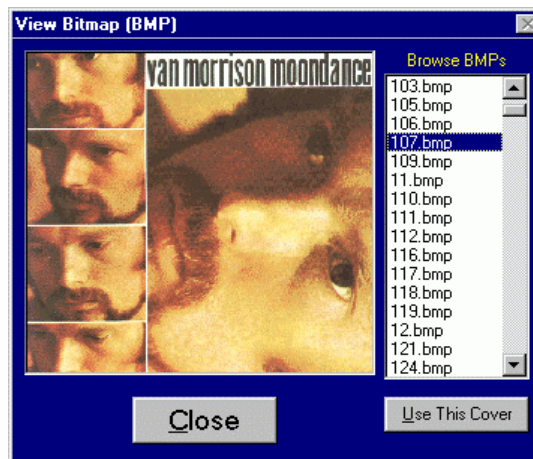
**Artist (Alt-I)** Album Artist Name. This data is used on the ALBUM SELECT screen. See the TIP below about using the words “A” and “The”.

**Album (Alt-U)** Album Title. This data is used on the ALBUM SELECT screen. See the TIP below about using the words “A” and “The”.

**CDText Button** This button brings up a CDText Data entry screen. In that screen you can enter Artist Text and Album Text that you want to show up on the CD changers' display, if it supports it. If you want the data to be reversed on the CD changers display, check the "Reverse data" checkbox. Clicking the "Get Data Record" button retrieves the data from the database record. You can then edit it. The "Erase" button clears the Artist and Album Text fields. If the "Don't Export" box is checked, then when updates the data is not set to Export to the changer when you do a CDText Export. The CDText feature is may not be available in your current version of Wintrax. It is expected to be released in May 2001.

**Album Bitmap (Alt-B)** BMP file to be displayed for the album. By default the “Record ID” (unique record number) is used. This is the actually record number used by the database, and is shown in the bottom right corner of the database maintenance screen under the label “Record ID”. For instance, record 138 will look for 138.bmp by default. For a double album, you might only have one cover, and thereby link album 139 to 138, saving disc space by not scanning the album twice.

**View BMP (Alt-V)** – Allows you to find the bitmaps you need to assign to albums or songs.



## Song Data Grid

---

**Trk** – Track Number. A fixed number between 1-and-32 or 33-and-64.

**Time** – Minutes and seconds play time for the song.

**Title** – Song Title. The name of the song. (See tip below).

**Artist** – Song Artist. The name of the artist. (See tip below).

**TIP:** Avoid using the words “A” and “The” for the first word in an album title, song title, or artist name. Otherwise nearly half the songs or artist will be filed under the “A” and “T” bins. This slows down searches, makes sorts lopsided and slows down the overall filing system. It is common practice for people to intuitively drop the “A” and “The”, like at the record store, or library. “The Doors”, should be filed as either “Doors” or “Doors, The”. Or “A New Kind of Love” should be filed, “New Kind of Love, A”. Also, it is advised that you use upper and lower case instead of all caps. Upper/Lower case is easier to read, and it takes up less space on the screen allowing more of a title or artist name to show. Typing etiquette likens using all CAPS for no reason to “SHOUTING”.

**WARNING:** Avoid using special characters including periods, commas, asterisk, parenthesis, underline, and quotes in Title and Artist information. Unless the artist or song title begins with either a letter (A to Z) or number (0 to 9) it will not be indexed and will not show on Wintrax Song or Artist Search screens.

**Year** – Year song was released (example 88 or 1988, 01 or 2001, etc.).

**Control** – A special feature that allows song titles to perform other functions, such as:

1. **CD Track** – Treats the data as a CD track (default behavior).
2. **Pause Secs** – Delay n number of seconds between songs. (Put number of seconds in the CtrlData field)
3. **Wave Play** – Play a wave file instead of a track on a CD. Put the wave file name in the CtrlData field. In future versions after May 2001, you may also use this selection to indicate MP3 files.
4. **Wait for Key** – Stops between songs and waits for a key press. (Put key letter in the CtrlData field).
5. **Wait for Input** – Stop between songs until an input signal comes. (Put signal # in the CtrlData field).
6. **Send EOM** – When a song ends, send a signal to start something external. (Put signal # in the CtrlData field).

**IMPORTANT:** If you have the wrong selection selected, you play lists could stop for what appears for “no reason”. If you have this problem, find the song after where it stopped and check to see that the right control data selection is entered.

**CtrlData** – This five character field stores the data needed by the control commands mentioned above.

Wave file names are inserted here. They must be five characters maximum, with either numbers, letters, or both. This yields a combination of over six million file names. Do not put the “.WAV” extension in this field. This field also is used for the number of seconds to pause when using PAUSE. Or the input to wait for if using Wait For Input.

**Alt-BMP** – This setting points to an Alternate BMP to be used for a particular song rather than the Album BMP. This can be a number or name of a BMP file. You do not enter the extension BMP. If left blank, then the artwork for the record number for this record is assumed (the unique record number of the current album, bottom right “Record ID”).

Music **Categories** Per Song -- There are 16 categories that **each** song can be assigned to. Each song can be assigned from 1 or more of the 16 categories. A song can be assigned to Rock, Instrumental, and Seasonal, for instance. Click on the song title, then select the categories for that song, then select SAVE.

**Set All To Cat/User 1** - This button sets tracks 2 thru 64 to the same categories and users that the first song is assigned to.

*NOTE: Many times we get calls from users complaining that songs do not show up in the search lists. This is usually due to the fact that the song was not assigned a category and user number. Click on each track to see if it has been assigned. As you click on each track title, you may see the data change from song to song. The other reason you may experience this problem is that your filters are set to pick categories and users that a particular song is not assigned to. Also be sure the song title or artist name does not start with a character other than A through Z and 0 to 9.*

**Personal Favorites & Rating Per Song** -- Please be aware that all these ratings are on a Song-by-Song basic. Click on the song, then select the user and ratings, then click on save. Next click on another song.

Every song can be rated and assigned to a particular person. Select SAVE before moving to the next song or item.

**Hide/Censor Song (Alt-H)** – Terminates a songs ability to be added to the playlist. It will not show up in the artist and song select screens, and if selected from the ALBUM screen, a warning is popped up that the song cannot be selected.

**Reset Ratings (Button)** - This resets the current song Category to the first category. It also resets the Personal Favorites all to "9" ratings and selects every user. This action is only taken on the current selected song. To reset an entire album, select Track 1 in the grid, then click the Reset Ratings button, then click the "Set All To Cat/User 1" button.

**Tray Maintenance (Button)** – Pops up the listing of what CD's are in what players and trays.

**Close (Alt-C or ESC)** -- Closes the database maintenance screen. Be sure to SAVE your work, before closing it.

**Set All To Cat/User 1** – (see above discussion of categories). This option copies the category and user ratings used on Track 1 of the CD to all other tracks on that CD.

**Add (Alt-A)** – Add a new CD to the library. This will add a new blank record to the end of the database and set you there.

**Delete (Alt-D)** – Clears data for a single CD in the library. This DOES NOT delete the CD number however. You can and should re-use the record. The CD database is NEVER compressed or optimized.

NOTE: Records are never deleted, because to compact the database, we'd mess up our saved play lists. A play list is stored as a list of "Record ID's" and "Track Numbers". This method allows a particular CD to be moved around in the players and trays without ever affecting a play list. If you get rid of an album, delete it, and reuse the record. Instead of selecting "ADD", just go to the blank record and fill in the new data for a new CD.

**Find (Alt-F)** -- See the discussion on the "Find Screen" earlier in this document.

**Repeat (Alt-R)** -- See the discussion on the "Find Screen" earlier in this document.

**Disc ID (or Record ID):** A unique number assigned to every disc when it is added to the database. This number is used to point to the album cover (XXXX.BMP). This number is also used when play list files are built and saved. If you get rid of an album just reuse this number.

**Scroll-Bar and Prev and Next buttons:** This moves to the next record or previous record or jumps within the database.

**Maximum number of records** The current maximum number of records (CD's) that can be entered into the database is 32767, due to memory needed to sort the data. The maximum number of CD's that can be on-line at one time is 3200. This could be as many as several million songs, if every CD had 32 or 64 tracks.

**Disc Inactive** - This allows you to remove a CD from being played, yet keeps it from being deleted from the play list. If you take a CD from a changer to put in your car or to loan to someone, you would activate this check box. Normally if a play list tries to cue a missing CD, then Track 1 of the Next CD slot is cued. By

deactivating the disc using this checkbox, the software will KNOW the CD is missing and will skip past it in the play list. Once the CD is added back to your changer, uncheck this selection.

**Always REINDEX your database after making changes to it, or the changes will not appear on the Song/Album/Artist/Tray screen. This is done by selecting the Request Menu from the main screen, and the select “Re-Index Data” or press Ctrl-N.**

## Wave files

---

To use “WAVE” files (Sound Blaster/Windows compatible sound files) you must do the following steps.

1. In the WINTRAX.INI file under the [GENERAL] heading, add: “SOUND=WAVE”
2. Create a path under the C:\WINTRAX directory called WAVE (C:\WINTRAX\WAVE) -or-
3. In the WINTRAX.INI file under the [PATHS] heading, point to that path (or wherever they will be): “WAVEPATH=C:\WINTRAX\WAVE”
4. In the “Preferences Setup” screen select the “WAVE” option.
5. Create WAVE files using the Windows Recorder, or any other sound recorder than may have come with your sound card.
6. Name the files XXXXX.WAV. The X’s can be any letter or number. There is only room for five characters, but that should lend itself to over six million files; more than you’ll need.
7. In Database Maintenance, create an album. Title it “Wave Files” for instance, and put an Artist name (or “Wave Files” also).
8. Add track times, titles, and artists to the grid. Don’t forget to set categories and users for each track.
9. Double click on the Control Type in the grid, until you see “WAVE PLAY”.
10. Add the file name (1 to 5 digits/characters) into the CTRLDATA field. Do not add the “.WAV” extension.
11. Set the Player number to “9”
12. Set the Tray number to anything but “0”. (If you create multiple albums, you can use the same tray, since it is only necessary to be sure it does not have a “0” in that field.
13. Reindex the data, from the Main Screen.
14. You can now select wave files, just as if they were songs.

Just like songs, you can insert/add them to play lists. If a wave files is less than 10 seconds, there may be pause after the file plays, if the next player has not had time to cue. This is due to a MCI driver problem and will be corrected in a future release if possible.

**Note:** The **PageUp**, **PageDn**, **Up**, **Dn**, **Home**, and **End** keys only work when the grid has the control focus. You give the grid the focus by clicking on the titles at the top, a selection, or by using your **TAB** key. You know the grid has the focus when the column titles have a **RED** background. The grid does not have focus when the column titles have a **GREEN** background. This applies to all grids in Wintrax.

**In a future version Wintrax will support both WAV files and MP3 files.**

## Pause Control Cuts

---

Pause control cuts, like wave files, can be inserted into your play lists to make the system pause x number of seconds. Following the example given in creating WAVE file cuts, label a cut title on player 9 and tray 1 as a “Pause” cut. Then in the “Control Type” field, click on it until it says “Pause x Secs”. In the “CtrlData” field, put 30, 60, 90, or how many seconds you want the system to pause. Reindex your data. Then add the cut in your play list. When the system encounters the pause, it will stop for the number of seconds in the control data field.

## Collecting CD Cover Art

---

There are a number of Internet sites that sell CD's. Many of these site have the CD or Album Cover Art. Since this is copyrighted material, we are not allowed to post it, but you can pick up the files yourself. Directions for doing that are listed below. Then when Wintrax plays a song from a particular CD, the artwork will be displayed. By the way, this image is also displayed when the Wintrax Screen-Saver is active. (To "drop" the screen-saver, either press ALT ~ (Alt-Tilde) or double-click on the "Song Timer".

EveryCD [www.everycd.com](http://www.everycd.com)  
Amazon [www.amazon.com](http://www.amazon.com)  
CDNow [www.cdnnow.com](http://www.cdnnow.com)  
Borders [www.bordersbooks.com](http://www.bordersbooks.com)  
Muze [www.muze.com](http://www.muze.com)  
All-Music [www.allmusic.com](http://www.allmusic.com)  
CD Universe [www.cduniverse.com](http://www.cduniverse.com)  
Music Guide Web [music.zodchiy.com](http://music.zodchiy.com)

Remember: Click on each thumbnail for largest covert art work. Please respect the copyrights; only collect art work for CD's you own.

### Scanning Images

First, we'll cover scanning your own. Many scanners are different, so get familiar with your hardware, by scanning in a few test CD covers. Most scanner software allows you select the scan density. Since these images are going to be displayed and not printed, you don't have to use a real high density rate.

If you're using VGA 640 x 480 mode, then select 72 dpi (dots-per-inch). RECOMMENDED  
If you're using VGA 800 x 600 mode, then select 84 dpi (dots-per-inch).

Your BMP files should be 388 x 388 pixels. This is usually selected by dragging the outside edges (the dotted outline border) of your "preview" scanned image in or out and watching the size indicators change. These are either text boxes or coordinates in some corner of your screen. Once you scan an image, you should convert them from 24-bit Truecolor to 8-bit Indexed 256-Color mode for an estimated size 150k each. If you leave them in 24-bit Truecolor, they may be over a megabyte in size each.

If you can save them in 8-bit 256 colors, you'll reduce the size of the files tremendously AND reduce the display time when Wintrax uses them.

### Capturing Internet Images

Using MS Internet Explorer or Netscape, go to one of the sites mentioned earlier. Look up an artist or album using their search methods. Usually you will find the artwork, for the CD. If you click on the thumbnail of the album, you will usually get a larger image. To capture it, RIGHT CLICK your mouse while pointing at the artwork. A pop-up menu will appear. Select "Save Picture As.." (IE) or "Save Image As.." (Netscape), depending on which browser you use. Most other browsers work the same way. A "Save As.." dialog box will allow you to choose where to save the file too. If you're using Netscape, you must save the file as a GIF or JPG as automatically indicated in the "Save As Type:" list box at the bottom of the dialog box. (Changing it to BMP will not save it as one). Save the images to your "C:Wintrax\Images" directory (see note below about naming them).

If you're using Internet Explorer, when the "Save As.." dialog box pops-up, you can click "Save As Type:" and change the type to "BMP (\*.BMP)". Save images to your "C:Wintrax\Images" directory (see note below about naming them). It is best for Wintrax if you rename the BMP to the actual Record ID, so you don't have to go to each Record ID and add the BMP names manually. The easiest way to effectively do that, is to print

out an "Album Report (Sorted by Artists)" from the Wintrax Reports menu. Before you do though, go to "ReIndex", select "Filter Search Lists", and UNCHECK the "Show Loaded Albums Only". Then click the "OK" button, and choose to ReIndex the date. This will generate an index of ALL albums, not just the ones loaded. Then print out the Album Report.

By-the-way, don't forget to go back and change the "Show Loaded Albums Only" option back and ReIndex again when you're done, so that you don't get a lot of un-needed songs that are not online in your search lists. The Album Report will have the DISC ID next to each artist/album name, so you'll know what to name the BMP's you collect. This report is handy to have in your automobile if you have a big collection so you don't accidentally purchase the same album again.

### ***Additional NETSCAPE step***

If you use Netscape and have to save the files as JPG or GIF format, then bring up MS Paint or your favorite graphic editor. Load and resave each graphic, changing the "Save As Type:" to "BMP".

## CD WIZZARD

---

from BFM Software



A Quick Way To Import Song Data!

### ***Using CD Wizzard to import CD data from the Internet and into Wintrax:***

Wintrax software versions greater than 1.01.18 now support direct importing of data from a program called CD Wizzard, that is capable of capturing CD Album data from the Internet. You simply log on to the Internet, slip a CD into your PC's CDROM slot, and click "Get Disc Data from CD Internet Database". A few seconds later, the artist, title, songs, and times are all captured. Then the data can be exported to ASCII, so that Wintrax can import the data.

A public database on the Internet called CDDB database has over 100,000 records with song/artist data. By reading the table-of-contents (TOC) on a CD you insert into your CDROM drive, supporting programs like "CD Wizzard", are able to compare the TOC data with its' search algorithm and sends back the correct data for almost any given CD.

"CD Wizzard" for Window 95 is such a program. This program was written by Brett McDonald and allows you to use your PC CDROM to play CD's, as-well-as capture data about the CD from the Internets' CDDB database. It is shareware, with a rough cost of about \$25 for a registered copy. WELL WORTH IT! It can be downloaded at <http://www.bfmsoft.com>, and there are links to the site from our web site, as well as links on our download page. It has an ASCII export feature to export data collected. Wintrax can then import the data. Be sure to pick up version 4.35 or greater from our web site download page, or the BFM Software Web Page. Earlier versions prior to 4.34 do not export correctly.

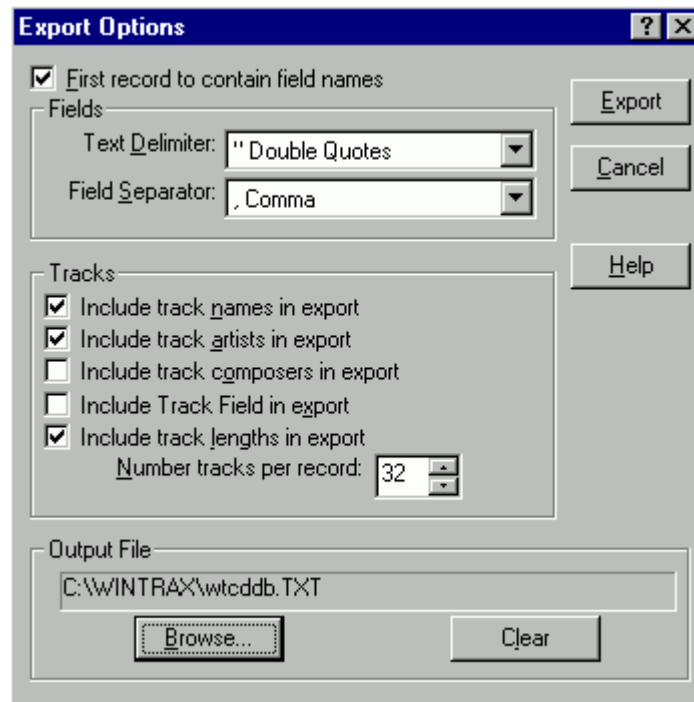
We have used this program with much success. We put some rare and strange CD's that we thought would definitely NOT be in the database. They were, so we don't feel like our music tastes are so weird now<grin>! Since the program is shareware so you can try it, before you buy it.

We recommend you download it and decide for yourself. Then we highly recommend you pay the small fee to register. These guys have done great work and deserve the small fee they are asking for the program.

If that doesn't strike your fancy, go to "www.cddb.com" and see if you can find one that does. If you use another one, be aware that our import only supports the aforementioned program directly, so you may have to "massage" the data before Wintrax can import it. The Wintrax import specification is listed below:

When you export the data to ASCII from CD Wizzard here are the steps to take to make it usable by Wintrax.

1. Collect the data from the Internet by using CD Wizzards instructions.
2. In the C:\wintrax sub-directory, delete any previous files with the name "wtcddb.txt".
3. From CD Wizzard's main pull-down menu, select "Discs" (Alt-D)
4. Select "Disc Database..." from that menu.
5. Select the "Disc Commands Menu" button on the right lower side of the Disc Database screen (Alt-C)
6. Select "Export All Discs Found..."
7. Set the following fields in the CD Wizzard "Export Options" screen. **DO NOT SET ITEMS NOT CHECKED BELOW. Most of the support calls we receive on importing CD's into Wintrax from CD Wizzard are because the following information was not followed to the letter.**



CD Wizzard "Export Options" screen

[ ] Include track composers in export [DO NOT SELECT THIS ONE]

[ ] Include Track Field in export [DO NOT SELECT THIS ONE]

Number of tracks per record [32] [PUT "32" ALWAYS NOT "99"]

Output File: "c:\wintrax\wtcddb.txt" [USE ONLY THIS FILE NAME AND DIRECTORY]



## Tray Maintenance

The Tray Maintenance screen shows a list of all the players and trays and what CD is in each slot. You can Remove, Cut, and Paste CD's from this screen. To add CD's you should go to Database Maintenance, and insert the Player and Tray Number, then "Re-Index". If two CD's are accidentally assigned to the same tray, only one will show. You can use the TRAY LOAD report (see "Reports Output") to find such instances.

### Filter Screen

To activate filters, you will find an option under the Request Menu on the Main Screen. Filters are used to determine what data will show up on the reports, and on the Artist, Song, and Artist Search screen.

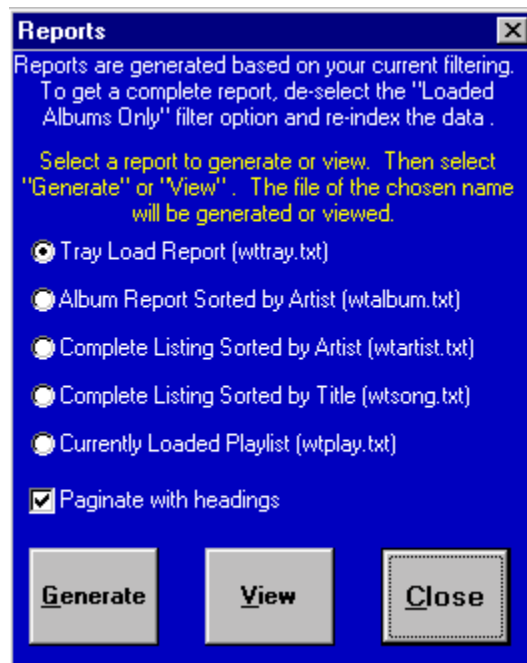
For every song in the database, you are allowed to set up to 16 categories, 8 users, and user ratings. Filters allow you to purge out data that does not meet the criteria you set on the filter screen. For instance, if you set only the category "Country" for "User A" and Ratings 5 to 9, then after you re-index, the data that meets that criteria will be displayed for the Artist, Song, and Album search screens only. This helps if you want to be able to create a play list of songs for a particular user or category. As mentioned before, if you go to reports while a particular filter is in effect, then only that criteria will show up in reports also!



Filter Screen

## Reports Output Screen

---



The Reports Output screen, allows you to generate a number of reports. Reports are written to a file, when you select the “Generate” button. Selecting the “View” buttons calls up either Windows Notepad or Windows Write (or WordPad). You can then view and/or print the file from that program. If you de-select the “Paginate with headings” option, then the output is a continuous fixed ASCII type output that many other programs and databases can use for importing.

To access reports, from the Main File Menu (or Ctrl-O) pop up the reports screen. Select one of the four reports. Click Generate. After the hour glass goes away, click View. You can simply view the reports on the screen, or to print the reports, under Notepad or Wordpad, select File, Print. If you want to import the report data using a fixed-length type import, turn off the selection that says:

Paginate with headings.

Be sure to re-index afterwards, to get your request screens back the way you want them. Watch out! If have about 500 CD's your full reports could turn out to be over 130 pages for Sorted Artist or Sorted Songs (if you include all that is off-line)!

Again, reports only print out what is selected in the current filters, so a print out of everything you have on-line or not, turn off:

Loaded Albums Only -and-

Active Categories Only

in the Filter Screen, then reindex and run your reports.

**TIP:** Data included in reports is dependent on the current indexing of the data (filters and active players). For instance, to just get a report for player one, un-check all other players in the “Preference Setup” options, then Re-Index. Then generate the report. Only Player 1 data will be used.

Report data included on all reports is: Record ID, Player, Disc, Track, Song Title (or Album Title), and Artist name.

#### Report options are

**Tray Load Report (wttray.txt)** – A report of all the CD Album/Artists in currently on-line players, sorted by Player and Tray number.

**Album Sorted by Artist (wtalbum.txt)** – A report of all current CD Albums on on-line players sorted by Artist.



ID#	P	DSC	TK	ARTIST	ALBUM
203	1	100		Alan Parsons Project	Best Of Alan Parsons Project,T
138	1	76		Alice Cooper	Greatest Hits
147	3	6		Allman Brothers Band	Decade Of Hits 1969-1979
290	3	12		Allman Brothers Band	Legendary Hits
212	1	54		Animals	Best Of The Animals
537	1	95		Brooks & Dunn	Greatest Hits Collection
202	3	14		Browne, Jackson	I'm Alive
30	3	22		Browne, Jackson	Running On Empty
255	3	27		Byrds	Byrds Greatest Hits
162	1	92		Carrack, Paul	Carrack Collection 21 Good Rea
254	3	21		Charlie Daniels Band	A Decade Of Hits
424	2	79		Choice, Derek Van	Justice
142	1	79		Clapton, Eric	Unplugged
301	3	24		Cocker, Joe	Joe Cocker's Greatest Hits
234	3	26		Counting Crows	August And Everything After
145	1	82		Cream	Strange Brew, The Very Best Of
245	1	48		Creedence Clearwater Rivival	Chronicle
399	2	94		Crow, Sheryl	Tuesday Night Music Club
533	2	74		Dire Straits	On Every Street
44	3	29		Doobie Brothers	Best Of The Doobies
129	1	70		Doors	Best Of The Doors #1
130	1	71		Doors	Best Of The Doors #2
61	1	36		Dr Hook	Greatest Hits & More
47	3	32		Eagles	Greatest Hits 71-79
48	3	31		Eagles	Greatest Hits Vol 2
391	2	32		Eagles	Hell Freezes Over

Album Report Sorted By Artist (WTALBUM.TXT)

**Complete Listing Sorted by Artist (wtartist.txt)** – A report of all current Artist/Songs on on-line CD's (that are not censored) sorted by artist.

**Complete Listing Sorted by Title (wtsong.txt)** – A report of all current Songs/Artists on on-line CD's (that are not censored) sorted by song title.

**Currently Loaded Playlist (wtplay.txt)** – A report of the current play list (from the Main Screen). This report is in the order that the playlist is displayed on the main screen.

Once a report is generated, you do not have to regenerate it again to view it. The files (filenames mentioned above) reside in the Wintrax directory and can be used by other programs, or can be deleted to recover disk space. Be careful not to delete the WTNOTES.TXT file when you delete them.

## Software Updates/Upgrades

---

Software updates are available on the Internet at on our web site at <http://www.cdcontrol.com>. If you download the updates from the FTP directory, please be sure to read the notes on the Download page. Also be sure to check our Newsletter page for recent changes or suggestions. Any time you check the site and find a version that is higher than your current version, you may update your software for free. Due to the uniqueness of this software, we are constantly adding, modifying, enhancing, and improving features. Sometimes you may find buttons or options that do not work yet. This is due to the fact that we may be adding a feature, but did not get it finished before we needed to release a maintenance upgrade. While this is not necessarily common with other software vendors, we have practised it occasionally, as we sometimes make frequent changes to better the software. Basically if you find a new feature that does not work, read the wtnotes.txt file for information. If nothing is found, you can bet it will probably work on the next release.

A single person licenses this software for single site use. The person whose name appears in the registration may install this software on each and every computer that they own at a single site. Installation on computers not owned by the registered party or at multiple sites is a violation of the license agreement.

Copying and scanning of album covers is protected under US Copyright Laws. It is generally assumed that you are allowed to make an ethereal copy for yourself of albums that you own and that are in your possession. Distribution and/or public release or sale of them is strictly prohibited.

## Software and Hardware Setup

---

### **Hardware Setup**

Install a secondary LPT line printer port card after you have set the interrupt and address jumpers and with the computer turned off! Unless you are using a local-area-network, or a sound card that is set to interrupt 5, you should set the interrupt jumper on the port card to interrupt 7 (INT7). Otherwise you will need to find an unused interrupt to use. Typically interrupt 7 should be used, or on rare occasions interrupt 2. Interrupt 7 is the one your current printer uses, but since the second card will rarely be active, it's ok if two printer cards share the same interrupt.

Typically your first printer port address is set to 378 hex, the second port is set to 278 hex, and the third port, if installed, resides at 3BC hex. Just be sure that you set the port card to an address not used by your currently installed port card. How do you know? During boot time, watch as the BIOS screen zooms by, and press PAUSE or BREAK to view them, or use Microsoft's MSD.EXE in your system command directory.

It will show that the system detected a printer port at such-and-such address, as well as your comports. Just press the PAUSE key on your computer to stop the display long enough to read it, then press ENTER to resume.

Install the card by turning the computer off and inserting it into an empty expansion slot on the motherboard. Turn the computer back on and watch as the BIOS screen zooms by again, to see if the BIOS firmware found the new port. If so, it should show LPT1 at 378h and LPT2 at 278h, or something similar. Use your pause key to stop the display. Jot down the port order. If the card you installed moved to the first address, then I would recommend moving your printer to that card connector and run HJ on printer port 2.

If you are using a PnP card, please see the chapter on Preferences and Setup for information on how to set the port address and other special information. Be sure the card can handle "Standard Bi-Directional" printer port mode, sometimes called Standard Mode or SPP Mode.

### **Pioneer® Players**

The 1/8 inch mono phone plug should be plugged into the SR CONTROL IN jack. The 2.5mm mono phone plug should be plugged into CD DECK SYNCHRO jack. The wire with the spade lug should be connected to one of the nearby CD player chassis screws. It is essential that the ground wire be used or the system will not work. (See the cable chart for what colored wires go to what players). The wire with the spade lug should be connected to one of the nearby CD player chassis screws. It is essential that the ground wire be used or the system will not work.

### **Sony® Players**

For player 1, the Red/Green wired 1/8 inch mono phone plug should be plugged into the S-LINK / CONTROL-A1 jack on the left and the yellow wired 1/8 inch mono phone plug should be plugged into jack on the right.

For player 2, the Blue/Black wired 1/8 inch mono phone plug should be plugged into the S-LINK / CONTROL-A1 jack on the left and the white wired 1/8 inch mono phone plug should be plugged into jack on the right.

### **Software Registration**

The software, when you receive it, may be set up for DEMO mode. Unless you enter your software registration code, the software will not operate a CD player. Entering your registration is a very simple process. The demo version of the software on our web site cannot be registered, so be sure if you download it from the web site, that you download the registered version.

**Your registration number is on the diskette, invoice, or both.** In the Preferences Setup screen you will see a place to enter your Registration Name and Registration Code. Enter your name, as seen on your invoice or diskette, and press ENTER. Next enter the serial number / code and press ENTER. That's all there is to it. If you make an error, or type in a wrong digit the process will not work. Also, it doesn't matter if you use upper or lower case on your name.

Be sure to save the registration information somewhere, as you may download upgrades from our web site web site that are set to demo mode, and you may need that information to activate them. Also, along that line, if you download a demo or upgrade be sure to BACKUP your Wintrax.DTA, Wintrax.EXE, and Wintrax.INI files before installing or copying the demo or upgrade into your WINTRAX directory.

### [IMPORTANT WARNING]

**NEVER, EVER, INSTALL AN UPGRADE OR NEW DEMO COPY WITHOUT FIRST BACKING UP YOUR ENTIRE WINTRAX DIRECTORY TO ANOTHER DIRECTORY OR DISK. AGAIN, BE CAREFUL TO NOT OVERWRITE YOUR DATABASE: WINTRAX.DTA**

If it appears that we're being a tad forceful here, we just want you to know, it happens all the time.

If the download or upgrade is corrupted for some reason, then your data may be lost and your system rendered useless unless you are able to restore it to its' previous state from your backup.

We suggest you back the entire program up at least once a month to a floppy disk or tape, just so you never lose all your data should you loose your hard drive to a disaster.

After installing an upgrade you may need to go through the registration procedure, and reset all or some of your settings. No refunds will be offered after the permanent registration codes have been issued. Test the software in demo mode to be sure it works correctly for you, before requesting your registration code. You may install the software on as many of your own computers as you like, but giving another person your registration number will void your support privileges and is a direct violation of the copyright regulations. We will adamantly pursue and prosecute violators, as it is considered a theft of services. This software is affordable enough, especially for what it does. We would think anyone running it would want to get regular upgrades and support at such a low price.

## Damage Disclaimer

---

Unless you order the cable and LPT card from us, we will not be responsible for any damage you incur to your hardware from using your own cables and hardware to run this software. We will only be responsible for replacing defective LPT cards and cables that we supplied.

We strongly suggest that you purchase a second printer port card to run the CD players from, as this isolates your computer system from any damage caused by improper or faulty cable connections, static electricity, or surges that could get back to your computer or CD system.

The LPT port card. The LPT port card that we supply will be warranted for a period not to exceed 90 days from the date of registration/shipping only if you return the warranty card.

## Refunds & Returns

---

If the software does not operate properly on your system please contact us as soon as possible, so we can help get your system up and running. A simple phone call can sometimes save hours. Most important, please read this manual first. Bad media or defective hardware will be replaced for free for 90 days if you return the warranty card. All registered users will receive major upgrades and access to new features or bug fixes via the Internet. It is the USERS RESPONSIBILITY to download and upgrade their software to the current version. We may ask you to upgrade to the newest version in order to help you if your problem has been fixed in a newer version. Additional warranty information is provided within this document.

Every attempt will be made by Wintek, to fix any bug that prevents the proper use and operation of the program, and in a reasonable time frame. Please report bugs to us, so that we can act on them. Reported bugs should include enough information for us to be able to duplicate the problem, error, or bug.

You may FAX bug reports to me at the fax number listed on the cover of this manual, or telephone them to us and leave them in our voice mailbox. We will notify you in a reasonable time frame of their remedy, or any work-a-rounds if available. This is custom software and my only retail product, so we will not always be available for a "live" response, but we will return calls whenever possible, and as soon as possible.

**SEE ADDITIONAL NOTES ON CHANGES NOT  
REFLECTED IN THIS DOCUMENT IN THE DOCUMENT FILE  
“WTNOTES.TXT” IN THE WINTRAX SUB-DIRECTORY AND  
AT THE END OF THIS MANUAL.**

## Index

---

- (Alt-1 or Alt-2), 28
- (Alt-D), 28
- (Ctrl-A), 27
- (Ctrl-E), 28
- (Ctrl-F1), 28
- (Ctrl-F11), 28
- (Ctrl-F12), 28
- (Ctrl-F2), 26
- (Ctrl-F3), 26
- (Ctrl-F4), 26
- (Ctrl-F5), 27
- (Ctrl-F6), 27
- (Ctrl-F7 or “Home” Key), 28
- (Ctrl-F9), 26
- (Ctrl-I), 27
- (Ctrl-J), 28
- (Ctrl-X), 27
- (Ctrl-Z), 27
- (F1), 25
- (F10), 26
- (F11), 26
- (F12), 26
- (F2), 25
- (F3), 25
- (F4), 26
- (F5), 26
- (F6), 26
- (F7), 26
- (F8), 26
- (F9), 26
- (Page Down), 29
- (Page Up), 28
- (Up/Dn), 29
- Activate and connect the players, 18
- Add, 41
- ADD, 32
- ADD ALL, 32, 71, 73
- Additional settings that you may want to change, 22
- Advanced player controls, 22
- Album, 39
- Album Bitmap, 39
- Album Search Screen, 31, 32
- Album Songs Select Screen, 32, 34
- Allow CD Repeats, 22
- Alt Menu, 26
- Alt-BMP, 40
- Alternate Program Title, 23
- Artist, 25, 39, 40
- Auto Load, 22
- Auto Play List, 27
- Auto Power-Off, 22
- Auto Shuffle, 22
- Automatic operation settings, 21
- Backup, 27
- BACKUP.BAT, 27
- Basic setup, 18
- before installation, 8
- By Weekday, 21
- Calendar date, 21
- Capturing Internet Images, 44
- Catalog Number, 39
- Categories, 40
- CD Cover, 26
- CD Cover Art, 44
  - Capturing Internet Images, 44
  - NETSCAPE, 45
  - Scanning Images, 44
- CD Player Compatibility, 11
  - Pioneer® PD-F (Carousel Type), 11
  - Pioneer® PD-F (File Type), 11
  - Radio Shack Optimus® model CD-100, 9
  - Radio Shack RCA® mega changers, 9
  - Sony® CDP-CX (Carousel Type), 11
  - Sony® CDP-CX151, 11
  - Sony® CDP-CX153, 11
- CD Spine, 26
- CD Wizzard, 11, 12, 38, 39, 46, 47, 48, 68, 72
- CD WIZZARD, 46, 68
  - import CD data from the Internet, 46
- CDSSEND.EXE, 20, 78
- CDText Button, 39
- CHECKLPT.COM, 19, 20, 64, 78
- Clear Play List, 26
- Clock, 25
- Clock 12/24, 23
- column title abbreviations, 30
- COMMON UPGRADE PROBLEMS, 68
- Completing setup, 23
- Control, 40
  - CD Track, 40
  - Pause Secs, 40
  - Send EOM, 40
  - Wait for Input, 40
  - Wait for Key, 40
  - Wave Play, 40
- CtrlData, 40
- Cue Fudge, 23
- Damage Disclaimer, 55
- Data entry tips, 12, 23, 38
- Database Management Screen, 38
- Delete, 41
- Disc ID, 41
- Disc Inactive, 41
- Dots, 29
- Eject, 26
- End-On-EOM, 20
- End-On-Time, 21
- Enter registration information, 18
- Errors and problems during installation or upgrades, 15
- Exit On Stop, 21
- Export ASCII Data, 27
- External Hook, 28
- Filter Screen, 27, 49, 50
- Find, 41
- Find Screen, 36
- Ground Loop Isolator, 10

- Hardware Setup, 53
- Help, 25
- Hide/Censor Song, 41
- Home, 28
- HOOK.BAT, 28
- Import ASCII Data, 27
- import CD data from the Internet, 46
- Info under the bottom of the Play List grid, 29
  - Play List Title, 29
  - Req Songs, 29
  - Total Time, 29
- Installation/Setup Instructions, 12
- Installing WINTRAX to a drive other than C:, 17
- Introduction and Purpose, 9
- Jukebox Icon, 28
- JUKEBOX.DTA, 28
- JUKELIB Library Import, 28
- Known bugs & issues, 69
- Late Release Notes, 68
- License Agreement, 79
- LIMITED LIFETIME WARRANTY, 61
- LISTBOT, 68
- Load Play List, 26
- LPT Cards, 19, 70
- LPT Control Cable, 66
- Main Wintrax Screen, 24
- Making a Pioneer®/Sony® LPT Control Cable, 66
- Manual Control Screen, 37
- Manual Direct Control, 26
- Maximum, 41
  - length of wave file name, 40
  - number of CDs online at one time, 41
  - number of cuts generated by Autoplay, 27
  - number of pixels, 13
  - number of records, 41
- Maximum number of records, 41
- Menu Bar, 25
- Miscellaneous settings, 23
- Mixer, 59
- Move Song Down List, 25
- Move Song Up List, 25
- Musical Note, 26, 34
- Musical Note Button, 26
- NETSCAPE, 45
- Page Down Arrow, 29
- Page Up Arrow, 28
- PAM-4, 59
- Passive Stereo Audio Mixer, 59
- Password Lock, 28
- Password Unlock, 28
- Passwords, 29
- Pause, 26
- Pause Control Cuts, 43
- Personal Favorites, 41
- Personal Favorites & Rating Per Song, 41
- Pioneer European Player Modification, 65
- Pioneer® PD-F (Carousel Type), 11
- Pioneer® PD-F (File Type), 11
- Pioneer® Players, 53
- Play, 26
- Play List Control, 22
- Play List Grid, 29
- Play List Lines 1/2, 28
- Play List Load, 21
- Play List Title, 29
- Player, 39
- Player Separation, 27
- Player/Disc/Track, 25
- Pre-Cue, 22
- Preferences Setup, 18
- Product Registration, 80
- Radio Shack Optimus® model CD-100, 9
- Radio Shack RCA® mega changers, 9
- Randomize, 22
- Rating Per Song, 41
- Red/Green/Yellow/Black/Gray Dots, 29
- Refunds & Returns, 55
- Registration Code, 18, 54, 73
- Registration Name, 18
- Reindex, 28
- Removing the sample data, 15
- Repeat, 41
- Reports
  - Album Sorted By Artist, 51
  - Complete Listing Sorted by Artist, 51
  - Complete Listing Sorted by Title, 51
  - Currently Loaded Playlist, 51
  - Tray Load Report, 51
- Reports Output Screen, 50
- Req Songs, 29
- Reset Ratings, 41
- Review and setup the music categories, 19
- Review and setup user names, 19
- SAFETY WARNING, 65
- Save Play List, 26
- Scanning Images, 44
- ScrnSaver, 23
- Scroll-Bar, 41
- Search List Lines 1/2, 28
- Select the player control address, 19
- Set All To Cat/User 1, 41
- Set player song end and cue options, 20
- Shuffle Play List, 27
- Software and Hardware Setup, 53
- SOFTWARE INSTALLATION, 14
- Software Registration, 53
- Software Updates/Upgrades, 52
- Song Data Grid, 40
- Song Time Display, 25
- Song/Album Search Screens, 34
- Sony® CDP-CX (Carousel Type), 11
- Sony® Players, 53
- Star, 26, 34
- Star Button, 26
- Start and End Signals, 64
- Start At, 21
- Start/EOM, 64
- Startup and shutdown options, 22
- Startup Load, 22
- Stop, 26
- Stop At, 21
- Table of Contents, 2

Testing your connections, 78  
Time, 40  
Title, 25, 40  
Title Bar, 25  
Total Time, 29  
Tracks 33 to 64, 39  
Tray #, 39  
Tray Maintenance, 16, 28, 39, 41, 49, 72, 73, 77  
Trk, 40  
undocumented features, 70  
Up or Dn Arrow, 29  
Updates to your Wintrax Software, 16  
Upgrade history, 70  
UPGRADE PROBLEMS, 68  
Using the sample data, 15  
Version X.XX.XX, 25  
View BMP, 39  
Wave Active, 22  
Wave files, 43  
wconvert.bas, 68  
WCONVERT.BAS, 27  
WCONVERT.EXE, 16, 27, 38  
Web sites for artwork, 44  
WINTRAX.DOC, 8  
WINTRAX.DTA, 27  
wtalbum.txt, 51  
wtartist.txt, 51  
WTNOTES.TXT, 8  
wtplay.txt, 51  
WTSAMPLE.EXE, 15, 18, 69  
wtsong.txt, 51  
wttray.txt, 51  
X-10 Remote Control, 62  
Year, 39, 40

## Appendices

### Appendix A: Passive Stereo Audio Mixer

---

#### Model "PAM-4"

from Wintek Software Company

**QUESTION:** "How can I connect more than one stereo CD changer to my single stereo CD/Aux input jack on my receiver or amplifier? Do I have to use an external mixer? How did you solve that problem?"

**ANSWER:** You can use a passive stereo mixer or combiner as shown below, or a commercially available active stereo mixer with multiple channels (see links on our ADD-ON's page), or the type that DJ's use for clubs or parties (available at Radio Shack). They usually have sliders or volume controls and usually run on household voltage or batteries. You can build the passive mixer below, if you are electronically inclined for about \$20 and less than an hour of your time, or order it from us preassembled and tested for \$59.95. Cost for an active mixer is about \$200-\$300 and are available from some of the companies listed on our ADD-ON's page (see ADD-ON's button on our main page).

#### *Passive Mixer Photo and Schematic*



Passive Mixer Outside View

Shown here are four sets of stereo inputs and one set of stereo outputs (the jacks on the right). You can just come out of the box with a patch cord and not deal with the output jacks (as described below).

For about \$20 (if you have the tools), you can build the above passive mixer for four-or-less CD changers that will work quite well to combine the CD players signals. A passive mixer just uses resistors to isolate the players from each other so they don't cause an impedance mismatch being all connected together.

An impedance mismatch distorts the sound quality, changes the frequency response, and usually affects your volume level. Passive mixers, like the one described above and below, will drop the audio gain just a tad (about 3db), but do not usually distort the audio. You can make up for the audio drop by turning your amplifier or receiver up about 1 notch.

**IMPORTANT:** You should NOT use a "Y-cable" because of the player's solid state output. Players not playing will clamp their output to ground and cause an impedance mismatch and drop in volume level as described above. This effects players that ARE playing.

We have several links to audio music equipment supply companies on our web site that sell four, six, and eight-channel stereo mixers that take up one-or-two rack spaces (19"W x 1.75"H -or- 19"W x 3.5"H). These

are brands such as Ashly, Rane, Symetrix, Fostex, and Samson, and run from \$210 to \$500, depending on the features and quality. This is the ideal route, but if you're on a budget, read on.

The following text based schematic is for a four-channel passive mixer. We at Wintek SC, and many of our other customers have built and tested the passive mixer below. It works quite well, with no bad side effects.

You can build it with more or less channels if you wish, but if you need to combine more than four players, we strongly suggest an active mixer, due to the greater signal loss.

The parts you need for this four-channel passive mixer are available from Radio Shack, Fry's Electronics, Digi-Key, Jameco, Mouser, or other electronic parts stores.

**TOOLS :**

- 1 - 25-watt soldering pencil (Radio Shack Cat# 64-2070, \$6.99)
- 1 - Roll rosin core solder .5 oz (Radio Shack Cat# 64-001, \$1.19)
- 1 - Nibbling tool (Radio Shack Cat# 64-823, \$10.99)

**OR** optionally (if you feel uneasy with a soldering iron) you can use:

- 1 - Solder tape strips (Radio Shack Cat#64-010, \$1.59). You wrap the tape around the connection and heat with a match to solder it.

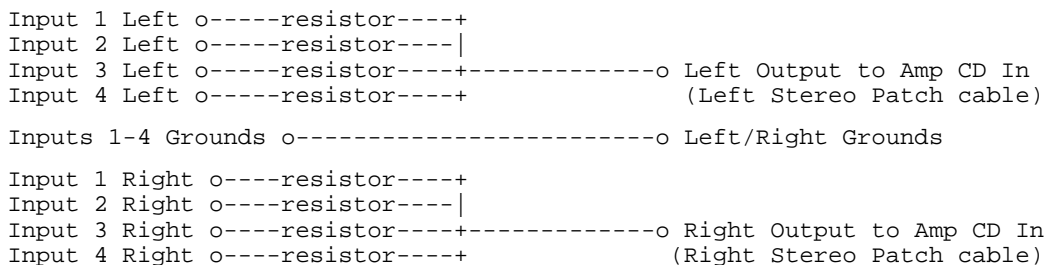
**PARTS :**

- 8 - 4.7k ohm 1/4 watt resistors (Radio Shack Cat# 271-1330, 2@\$0.98)  
(The resistors come 5 to a pack, so you only need two packs)
- 1 - 4" x 2" x 1" project box (Radio Shack Cat# 270-1802, \$2.29)
- 1 - Octal Phono Jack Board (Radio Shack Cat# 274-370, \$2.19)
- 1 - 6 foot Stereo Patch cable (Radio Shack Cat# 42-2351, \$3.99)

**OR** optionally you can use:

- 1 package - Panel Mount RCA phono jacks (Radio Shack Cat # 274-346, 4 in a pack @ \$2.59)

**Circuit Description**



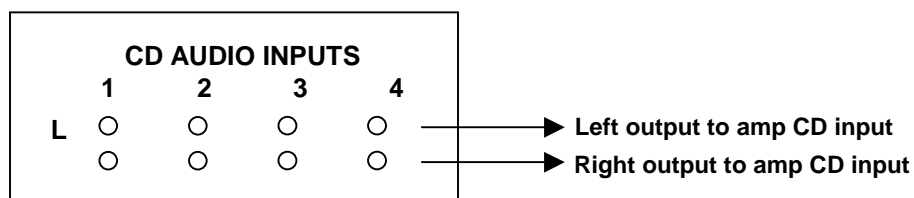
Each input for each channel must go through a 4.7k resistor to the output cable to be combined with all the other inputs from other players.

Mount the octal jack board onto a project box. This is done by cutting out a square big enough for RCA connector strip to protrude through. This can be done with a drimmel or notch tool.

Cut the plugs off one end of a standard audio patch cable, strip back the end, and feed it through a hole in the project box.

Solder a resistor, to the center tab of the four input jacks as shown above. Then connect the other side of all four resistors to left output cable. Do the same for the other four jacks for the right output.

Buss all the grounds of all those jacks to the shield on the output cable. It should end up looking like this complete with case.



**LIMITED LIFETIME WARRANTY**

Wintek's passive audio mixer Model PAM-4 has a limited lifetime warranty. Should it become defective through normal use, return it to us for replacement; you pay the shipping. We will repair or replace it free of charge, and return it to you; ground shipping on us. The PAM-4 has a 30-day money back guarantee; beginning date of purchase. Should you want the shipment expedited, please contact Wintek for shipping charge arrangements. **BREAKING THE WARRANTY SEAL ON THE UNIT OR OPENING THE UNIT VOIDS THIS AGREEMENT.**

*Copyright ©1990-2000 Wintek Software Company*

## Appendix B: X-10 Remote Control

---

The Wintrax X-10 Control Interface allows you to control the Wintrax software via X-10 remote controls. By connecting the below devices to a serial port on your PC, and by using a "wireless" or "wired" X-10 controller, you can send commands to the Wintrax software. This allows you to bump a song for instance, from another room, or even outside from your swimming pool.

If you modulate your PC screen to a vacant TV channel and then pipe it to all your other TV's you can use the X-10 controller instead of a wireless keyboard. You can pick songs, scroll the play lists, etc.

The devices needed to implement the control are:

- X-10 Serial Port Interface Connector - Model HAS-1160 \$99.95
- X-10 2-Way Power Line Interface - Model HAS-1135 \$22.95

Available from **Home Automation Systems Inc, 1-800-762-7846 (fax 1-800-242-7329)**, or on the web at <http://www.smarthome.com>. You will also need a wireless or wired X-10 controller.

Plug the two devices together with the supplied cable, connect them to your PC serial port, and then edit your Wintrax.INI to turn on the control.

Default House Code should be "P".

Create an edit the Wintrax.INI file in the Wintrax folder so that it contains these variables:

```
<--start-->
[X10]
UseX10=1           (0=Not used, 1=Yes/Activated)
SerialPort=2      (1, 2, 3, or 4 - Default is 0)
HouseCode=P       (Default is P)
UseLists=1        (0=Not used, 1=Use X10 activated play lists).
<--end-->
```

The X-10 control functions are default mapped as follows:

Unit	ON	OFF	BRight	Dim
1	PLAY	STOP		
2	PAUSE	EJECT		
3	TAB	SHFTAB		
4	FKEY	ALT		
5	ESC	ENTER		
6	SPACE	HOME	LEFT	RIGHT
7	UP	DOWN	PGUP	PGDN
8	CTRL			
9	HELP	SONGUP		
10	SNGDN	MANUAL		
11	PLAY	PAUSE		
12	EJECT	STOP		
13	ALBUM	ALT		
14	SONG	ARTIST		
15	HOME	EXITPGM		
16	SHUFFLE	SEPARATE		
17	END	THERE IS NO X10 NUMBER 17		

These are subject to change, and may. Variables in the X-10 section of the Wintrax.INI allow the user to re-map or reassign these keys, such as: Play=01ON, Stop=01OF, Pause=02ON, Eject=01DI, ESC=01BR, etc. (on single digit unit codes, use the proceeding 0 number (01, 02, etc).

Be sure to spell the control commands as listed in the above chart.

If you need help with remapping, feel free to give us a jingle on the phone. The above commands allow you to control the entire software, nearly, but may not be mapped very user friendly. That's the purpose of the ability to remap them. ALSO... Note that unit code 09 thru 14 are actually the same as the F1 through F12 keys. On the album screen, then, to select the 5<sup>th</sup> album you would press Unit Code 11-ON (same as F5 too). That's also the reason that Play, Pause, Stop, etc is mapped twice. The first set is mapped to the actual control code, the second set would only work from the main screen, otherwise they perform as function keys on the other screen.

## Appendix C: Start and End Signals

---

### Start/EOM

By using an additional LPT port, you can set Wintrax so it will send an external signal and receive an external signal to interface with other automation equipment.

In the WINTRAX.INI file, put the following variables under the "[GENERAL]" section to turn on this feature:

```
StartPort=&H379 (LPT1 address + 1)
StartSignal=64 (for pin 10)
EOMPort=&H378 (LPT1 address + 0)
EOMSignal=1 (for pin 2)
```

[WARNING: Semi-Technical Data follows, skip it if you want!]

Create a "Control CD". A *Control CD* is a fake CD record that you assign to player "9", tray "1" (or whatever). Name the album "Control Codes" and the artist "Control Codes". For tracks 1, for instance, create a track that says "External Source". The artist should be "Control Codes". Then for the "Control Type", double click on the "Control Type" row, until you see "Wait for Input". Then in the "CtrlData" row, put "64". Select all categories, and all users, then reindex your data. You should use a different LPT port card than you are using for your player control (See notes below). The data in the "CtrlData" row, selects which pin will be used for the input signal, should it need to vary. If left blank, it uses the "StartSignal=" value.

Next insert the "External Source" track into your play list at various places, just as you'd insert a song. When the system comes to the cut, it will send a signal to the EOM port lead when the current song ends. The play list will then cue up the next song, and wait patiently for an input signal from the Start port. When it receives it, it will continue to play until it encounters another such "break".

You can cancel the wait for the external signal, by pressing "STOP", however the cut will be un-cued if you do.

LPT1 is usually &H378, LPT2 is &H278, and LPT3 is &H3BC, but check with your system BIOS screen, the Microsoft MSD.EXE program, or our CHECKLPT.COM program to find out what your addresses are.

The StartPort address is one byte more than the LPT address.

The EOMPort address is the LPT address.

The StartSignal is the bit value expected for that particular pin (Pin 10=64, Pin 11=128, Pin 12=32, Pin 13=16, and Pin 15=8)

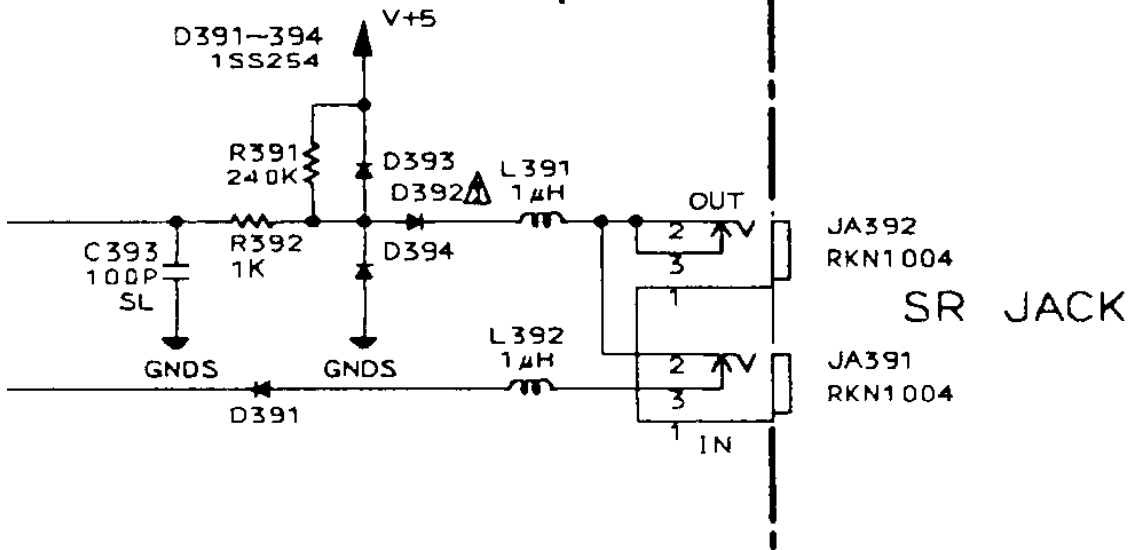
The EOMSignal is the bit value you expect for the particular output pin. (Pin 2=1, Pin 3=2, Pin 4=4, Pin 5=8, Pin 6=16, Pin 7=32, Pin 8=64, and Pin 9=128. (Pins 18 through 25 are GROUND)).

For EOM's, it is recommended you use a solid state relay or opto-coupler on the output, since LPT ports can only source about 25 ma at 3v max. For the StartSignal, just bring the specified lead to ground.

## Appendix D: Pioneer European Player Modification

All USA Pioneer 25/50/100 discs players have an option called "SR". This option includes a CONTROL-IN, CONTROL-OUT, and CD-SYNCHRO jack, on the back of the players. Some European models do not have these jacks for some reason. The circuit board has the traces and pads for the components, they are just missing. With little effort, you can modify the players to have these features by using the schematic below. Once modified, the players will work with Wintrax or our PSR-4/8 controllers.

All components except the 2 connectors  
are available from RS, Maplin etc



Many thanks to Duncan Smith, in the UK for this information.

The diodes are just standard switching/steering diodes, like 1N914 or 1N4148.

### SAFETY WARNING

: CAUTION :

**Please be aware that modifying your changer will void it's warranty. Modifications should only be done by qualified technicians and all safety precautions should be observed. For your protection, always disconnect power to electronics and wear proper safety gear when performing modifications and when working inside around exposed circuits.**

## **Appendix E: Making a Pioneer®/Sony® LPT Control Cable**

The Pioneer® CD-to-PC cable consists of a DB25-Male D-connector with 3.5mm phone plug(s), 2.5mm phone plug(s), and one ground wire. **Warning:** Cable length should not exceed 25-feet without amplification. We sell a special LPT card that has extra current drive abilities to support 100 foot of wire. Alternately, we sell serial devices called PSR's, that allow cable runs of ¼ miles.

Connections on Pins 2, 3, 4, and 5, go via the center conductors of a shielded cable to the tip of 1/8 inch monaural phone plugs (Radio Shack #274-286). The shield to those cables is not used.

Connections on Pins 10, 11, 12, and 13 go via the center conductor of a shielded cable to the TIP of the 3/32 inch (2.5mm) monaural phone plugs. I REPEAT, make the connection to the TIP of the plug. Make no connections to the sleeves of the 3/32 inch plugs too.

A connection on pin 18 of the DB25 goes to a single wire that connects to the chassis screw of the CD player. The absence of this GROUND wire will cause the system to not work, or to work erratically.

Cable Connection Chart (for cable we supply) (Also for Sony® see next page for specific details).

<b>DB25 Pin</b>	<b>+Color</b>	<b>1/8 &amp; 3/32 Plugs</b>
2	red	Player 1 SR (or left SLINK jack)
3	blue	Player 2 SR (or left SLINK jack)
4		Player 3 SR (or left SLINK jack)
5		Player 4 SR (or left SLINK jack)
10	yellow	Player 1 CD Synchro (or right SLINK jack)
11	white	Player 2 CD Synchro (or right SLINK jack)
12		Player 3 CD Synchro (or right SLINK jack)
13		Player 4 CD Synchro (or right SLINK jack)
18	green	Player Chassis Ground (Sony: shield of player 1 SR plug)
19	black	Player Chassis Ground (Sony: shield of player 2 SR plug)
20		Player Chassis Ground (Sony: shield of player 3 SR plug)
21		Player Chassis Ground (Sony: shield of player 4 SR plug)

Upon registering you will be sent a floppy disk with the latest version and a printed manual. The hardware will also be sent if you order the deluxe version. After testing the new version, then you may request your registration number. This turns off the restrictions, and allows the program to operate fully.

The Sony® cable uses four (4) 1/8" (3.5mm) plugs. Connect the RED wire to Player 1 control tip (LPT Pin 2), and the GREEN wire to Player 1 control shield (Pin 18). Connect the YELLOW wire to Player 1 Synchro tip (LPT pin 10) and do not connect the shield. Connect the BLUE wire to Player 2 control tip (LPT Pin 3), and the BLACK wire to Player 1 control shield (Pin 19). Connect the WHITE wire to Player 1 Synchro tip (LPT pin 11) and do not connect the shield. Plug the RED/GREEN wired PLUG into the LEFT S-LINK™ jack and plug the YELLOW into the RIGHT S-LINK™ jack. Follow the same procedure for the 2<sup>nd</sup> CD player.

**IMPORTANT:** For the Sony® CDP-CX151 and CDP-153 100-discs chargers, you must use a stereo 1/8" phone plug and connect the red wire to the center sleeve tap, not the tip or the shield. The tip gets no connection, while the ground sleeve will get the ground connection.

You can MIX and MATCH the players with the Wintrax software, but you must attach a chassis ground for Pioneers, and observe the correct plug sizes.

### **Making your own player cable from modular telephone cable**

The cables we make are 14-feet using flat modular telephone 6-conductor cable with an RJ-14 on one end that plugs into a DB25M with a RJ-14 jack. On the other end, we strip the wires back about eight inches and the connect black and green together to a spade lug. Connect the yellow and white wires to the tips of 3/32"

(2.5mm) two-conductor mono phone plugs. Connect the red and blue wires to the tips of 1/8" (3.5mm) 2-conductor mono phone plugs.

Before cutting the modular jack off of one end of the telephone cable, hold it up with the small clip facing toward the back and the gold connectors facing forward and to the top. The blue or black wire should be to your left. If it is, that's the end you want to keep. The other end will have a yellow or white wire to the left. That's the end to clip off.

Solder the spade lug to the green and black wires. Solder the red wire to the tip of the 1/8" plug. Solder the blue wire to the tip of the 1/8" plug. Solder the yellow wire to the tip of the 3/32" plug. Solder the white wire to the tip of the 3/32" plug. Make no connections to the sleeve of those plugs.

Here's the Radio Shack part numbers to construct a single player cable using modular telephone cable (not recommended for distances over 25 feet).

1 Modular/EIA Adapter Kit (DB25M to RJ11/14 jack) RS Cat# 276-1405 \$2.99

1 Solderless spade tongue (#6 for 22 gauge wire) RS Cat# 64-3031 \$1.49

25-foot 4-conductor modular-to-modular phone cord RS Cat# 279-356 \$6.49

1 Two-Conductor 1/8" (3.5mm) mono phone plug RS Cat# 274-286 \$1.99 (black)

1 Two-Conductor 3/32" (2.5mm) mono phone plug RS Cat# 274-290 \$1.82 (red)

**The EIAA Adapter should be assembled as follows:**

Pin 2-Red Wire, Pin 3-Blue Wire, Pin 10-Yellow Wire, Pin 11-White Wire, Pin 18-Green Wire, Pin 19-Black Wire.

If you need to buzz-out the wires: Pin 2 should go to the tip of the 1/8" plug for player 1. Pin 10 should go to the tip of the 3/32" plug for player 1. Pin 3 should go to the tip of the 1/8" plug for player 2. Pin 11 should go to the tip of the 3/32" plug for player 2. Pin 18 and Pin 19 should go to the spade lug which should connect to the chassis of player 1. The others are not used for single player configurations.

## Appendix F: Wintrax® Late Release Notes

---

### ***LISTBOTJ***

For update information, please sign up on our private mailing list on our web site, for new product information releases, price changes, and so you will be alerted immediately of new updates or bug fixes. Our mailing list is PRIVATE and no information is sold or disclosed to any other entity or organization. Also be sure to visit our Web site often and watch for upgrades or new products.

### ***CD WIZZARD***

For information on how to setup and use "CD WIZZARD" and CDDB with Wintrax, please the section in this manual and see CDDB.TXT in your Wintrax folder.

### ***DEDICATION***

This program is dedicated in memory of my friend Fred Lindner (1949-1997) who believed music was the best gift one person could bestow on another to bring about happiness and a smile. May he find music more beautiful than he ever imagined in his new home. May God's Peace be with the Lindner family and with him.

### ***COMMON UPGRADE PROBLEMS***

A few users have had problems updating to the latest versions. Here are the known difficulties, and the fixes for them:

You must be on version 1.4.x or higher to use the WT\_14xU.EXE file. If you are not, download and install the full Version 1.4.x set or you may be missing DLL warnings.

1. If you receive a registration error after upgrading, go to the Preferences / Setup Screen, check to be sure your registration information is in tact. Then select the "OK" button. Exit and re-enter the program.
2. If you get a RUNTIME 'xxx' error after upgrading, edit your WINTRAX.INI and remove all the statements that pertain to the GRIDs, and restart the program.
3. If all else fails, delete the Wintrax.INI. If that fails then delete the Wintrax.CFG also. DO NOT DELETE Wintrax1.INI or Wintrax1.CFG. The file will rebuild itself. You do not need to download it from the Web or to reinstall it.
4. If you get brave and tamper with the playlist files manually, you could inadvertently add too many lines to the file causing a subscript error. If that is the case, bring up your play list in a text edit. Clip it to no more than 1023 total lines. Save it as a text file and then rename it ????.PLY
5. If no matter how hard you try you can't import your wtcd.db.txt file that you captured from the Internet, bring it up in CD Wizzard and inspect the data for extra commas or single open quotes that could be throwing our data import out of sync with our import routine. If you need help, e-mail us a copy of your wtcd.db.txt file.
6. If you plan to modify wconvert.bas (wconvert.exe) to import or manipulate the Wintrax data, be sure to get the latest "type structure" from us.

## Appendix G: Known bugs & issues

---

1. Automatic screen-saver sometimes stops play of music. Workaround is to manual bring up the screen-saver, since it is not really a screen-save, but an informational album display screen.
2. You must have a TIME for each track if you are using Sony players or the new Pioneer PD-F09, PD-F1009, or PD-F1039. This is not an issue really, if you collect your data from CDDB you should have times for all songs.
3. The new PD-F1009, PD-F09, PD-F09 changers do not have CD SYNCHRO jacks. Turn off End-On-EOM in setup and/or be sure all songs have times, as with the requirement for the Sony changers.
4. Rare program error when doing database maintenance and running. If you can help us duplicate this error,
5. If you have data for less than 25 CD's the system can hang for unknown reasons. To test drive the system run the file WTSAMPLE.EXE to extract the sample data. Be sure and reindex after entering the program.

## Appendix H: Upgrade history & undocumented features

---

### **v1.4.7 - January 2001**

- Previous Wintrax Customers - Please download and print the new revised Wintrax Manual on our Download page on our Web site at [www.cdcontrol.com](http://www.cdcontrol.com). It includes these release notes.
- See the WTNOTES.TXT in your Wintrax folder for addition information and modifications.
- added support for PnP (Plug and Play) LPT Cards. The the Setup section in this manual.

### **v1.4.6.6 - Dec 30 2000**

- fixed wintrax.mem file to get extended when adding new records
- new install no longer asks to import Home Jukebox data. You must go to the file menu and select Jukelib Library Import.
- now allow main screen to be moved around and setting is stored in 800x600 mode. To reset screens back for 640x480 mode, edit wintrax.ini and change settings for each screen top and left to -60, or just delete the screen variables under the [MainScreen] area of the INI file (they will restore to normal next time you enter/exit the program).

### **v1.4.6.5 - Dec 22 2000**

- fixed import from CDDB from truncating imported song times

### **v1.4.6\* - Oct 23 2000 (note the \* after the 6)**

- fixed reports show they will show 4 digit record ID #s.

### **v1.4.6+ - Sep 29 2000 (note the + after the 6)**

- fixed a problem with tracks over 32 corrupting play lists.

### **v1.4.6. - Sep 15 2000 (note the dot after the 6)**

- play list name was being displayed wrong
- fixed minimize/close problem not being able to re-maximize.

### **v1.4.6 - Aug 20 2000**

- shown in taskbar (8/29)
- removed MAXIMIZE button from Main Screen.
- fixed problem causing Pioneer LPT control to not release pause
- pressing backspace on search screen will null search current search

### **v1.4.5 - Aug 15 2000**

- added support for Sony 400
- added CDText form and control - will not upload yet
- added 40 character memo field to database maintenance
- allow search on memo field in database maintenance
- checked AltBMP problem. Nothing found wrong.
- added repositioning for Album Select screen.
- sending 2 play commands to PSR to make up for occasional drops.
- fixed 'load' filelist box so it updates after a playlist is saved

- added 'Reset Ratings' button in Database Maintenance. This resets all ratings for the entire CD to Category 1, All Users, All User Ratings 9.
- fixed problem with DELETE in Database Maintenance not updating the upper lower fields on the screen. It was working, just not displaying right.
- Resized all the screens, optimized for 640x480. Delete all variables in the Wintrax.INI file under the group [MainScreen]. The new settings will be called upon. Then you can readjust any screens that you see fit.

**v1.4.4 - May 24 2000 (no release)**

- single changer version released
- all full sized windows can now be repositioned, and positions are saved in the wintrax.ini file under the [MainScreen] group. This will be handy for those running in 800x600 video mode. If you have any problems with screen positions, exit Wintrax and delete all variables under the [MainScreen] group to reset them all to anchor everything back to top/left position 0.

**v1.4.2 - Apr 2000 (no release)**

- added trap to prevent error when folks click 33-64 tracks but don't use them.
- added trap to warn of import file errors
- added trap for illegal spaces in filter settings in low and high ratings.
- fixed "Disc Inactive" checkbox so it correctly displays the current status of the disc record.

**v1.4.0/1.4.1 - Oct 1999**

- requires that customer get a new registration code from info@cdcontrol.com or telephone at 817.370.7429.
- fixed problem with new installs reporting that "Network is down."

**v1.3.8 - Sep 1999**

- fixed problem when using ADD ALL from Album Select Screen. If a cut had exactly 32 tracks it would not add all.

**v1.3.7 - Sep 1999**

- added variable in Wintrax.INI to access/edit networked Wintrax Data: add under [PATHS] group, "DataPath=X:\WINTRAX" (X=Remote Network Drive C"  
If you're remoting Wintrax, be sure to also set remote paths for Images, Wave Files, and Play Lists. Lack of the datapath causes the software to look for it in the C:\WINTRAX directory (the default).

**v1.3.6 - Sep 1999**

- Corrected problem with Wintrax not unloading on shutdown. This problem started on the 1.3.4/1.3.5 upgrade.

**v1.3.5 - Aug/Sep 1999**

- On Autolist if not enough songs are found, then it only uses the number of songs found to meet the match.
- Now allows ReIndexing on demo version.
- Under file menu added direct call to CDWizzard.

There are INI settings under new heading. Add:

[Web]

CDDDBPath=c:\cdwiz\cdw.exe (default)

CDDDBName=CD Wizzard (default)

- added TIME at the end of the wintrax.dmp file so other programs like WTMONITOR can determine how long a CD has been playing.
- Changed Player Type setups to "Sony 200/300 (Sw-x)"
- Changed Tray Maintenance & reports to allow 300 discs on Sony.
- Time delay between steps is adjustable for Sony 300
- you can now exit the program with the form close button [X].

**v1.3.2 - May 1999**

- added hypertext to search screens. Now instead of typing just the first letter of an artist or song title, you can type more than one letter and the grid will find the closest first match. If you pause more than 3 seconds then a new search is assumed and the already typed letters are cleared. Couple of issues. Make sure the grid has the focus before you start typing your search keys so that if you need to use the SPACE key it won't cause another keystroke like add or something. To start over you can also press the CLEAR button.
- fixed problem with inactive records flag added in February inadvertently being set by certain database activities.
- added AUDIT path (c:\wintrax\audit). It keeps an audit trail of what played and when using the same format as the wintrax.dmp file except it has one more piece of data tagged to the end of each line; the time the song started playing. (See wintrax.dmp under 1.2.2 version notes further below). Example:

"Strait, George", "Chair, The", "Various Artist", "CC03 RPM Hit Disk", "02:48",  
 "01-090-04", "dance", "02:27:05", "0040", "6", "178", "178", "16:43:15"

Also, the file is named "WTyymmdd.ADT", I.E., WT990501.ADT. It is the customer's responsibility to manage (delete) these files periodically.

Normally they shouldn't get much larger than 400 lines or 80k bytes each.

### **v1.3.0 - Feb 1999**

- the WT130U file has two DLL's in it. Copy these to your C:\WINDOWS sub-directory. You will also need to re-enter your registration info. (PIO\_DLL.DLL and PSR\_DLL.DLL)
- Added "Test Drive" mode. Use Registration Name of "Test Drive" (the Registration Code is "50505050"). Doing this will enable to allow the software to control ONE player and allow making 16 requests and playing of 16 songs (about one hours worth). There are a number of limitations, but you'll know when you get to them, because a screen was notify you.
- added "ADD ALL" songs button in the Album Cut Select screen.
- on Filter Setting screen added buttons to set / reset / default filter selections.
- fixed Tray Maintenance & Reports for displaying 200 & 300 discs players
- The Manual Control screen was fixed for Sony's, so that next/prev track and next/prev disc only sends one step at a time. Pioneer wasn't affected.
- Added Inactive button on Database Maintenance Screen.
- On database maintenance when entering play and tray info, when field is full it autotabs to the next item.
- released updated Pioneer and Sony DLL's

### **v1.2.9 - Dec 1998**

- fixed problem with EOM staying high when talking to external devices.

v1.2.8. (build two. look for the dot after the 8)

- this build was made for complete installations. It looks for existing setups before overwriting the ini and cfg files. It sets the screensaver minimum to 0, 20 to 9999 seconds. It defaults to Pioneer players.

### **v1.2.8 - Oct 1998**

- Added CHANGED flag so if play lists changed, you are warned on EXIT.
- Fixed "PSR" code for Pioneer ADPD-1 and Pioneer 301-discs players.
- Fixed subscript error problem where if you used auto play list and already had songs in it and exceeded 1024.
- On back-to-back wave files, add a Pause Control Cut of about 2 secs, if you are using End-On-Time and End-On-EOM to prevent lockups, if you

experience the problem, or leave the WAVE "time" field set to "0:00".

- Added Screen Saver (dbl-click CD TIMER to drop or press ALT-~)
- Added 50/100 codes for Control-S (Player Type: SONY OLD)
- Added Player type setup for player dip switches to be set to 1,2, or 3.  
If you use the daisy chain, they must be in order. You can't skip a switch.
- Added another delay for the slower CDP-CX270 Sonys that occasionally miss a call.

#### **v1.2.7**

- fixed automatic loading of playlist even if StartLoad is not checked.
- now automatically clears old playlist before autoloading a new one.
- there are now 10 playlist than can be loaded instantly, via the keyboard or via X10. They are named X10LIST0.PLY to X10LIST9.PLY, and must be saved in your PLAYLIST sub-directory. You can load them instantly by pressing CTRL+0 thru CTRL+9, or by pressing X-10 codes 12BR, 12DI, 13BR, 13DI, etc thru 16BR, 16DI. They can be reassigned X10 codes by placing a line under the X10 section in the WINTRAX.INI file. Example: "X10LIST0=12BR" You can not change the name of the playlist; they must be X10LIST0 to 9. You must also add "UseLists=1" under the X10 section to activate this feature. That way, you can turn it off at (=0) parties, if you want to prevent accidents, since the feature will clear the current playlist without saving, and will load a new list without prompts! (Sorry, but you need that for unattended X10 automated control).

#### **v1.2.6**

- autoshuffle now works when play list is autorecycled.
- play list no longer gets stuck on last song, if autoshuffle is on.
- added a .1 sec delay in Sony cueing to see if we could isolate the occasional missed digit on the "disc" data that one customer is seeing.
- if you click STOP, wait about 5 secs before starting another song, or the countdown clock will not work. The system takes about 3-4 secs to issue STOPs to all the players. If you press PLAY or double-click on another song before all the stops are issued, you won't get a timer.

#### **v1.2.5**

- .1 fixed 'program encountered stop' and 'wave array 8 not found'
- Added AutoStart, AutoStop, and AutoExit to Setup. These features will automatically send a Play, Stop, and Exit, at the appropriate times, if the Wintrax software is loaded. Be sure you have your new play list load

set for a minute before the START time or you'll start from the old play list that was loaded after the last stop.

Times must be formatted as 0000 to 2359. Beginning at 1pm just add 12 hours, example: 1:00pm = 1300, 2:32p = 1432, midnight = 0000, 12:32am = 0032.

The colon ":" is not used. EXIT will occur 15 seconds after STOP is issued.

Players are Powered Up on AUTO START and Powered Down on AUTO EXIT (to prevent a CD from staying in CUE for long periods!)

No conditions are observed on EXIT, other than saving place in play list, so you should save any play list modifications so they are not lost on EXIT.

- Added Play List Load check box and time field. If this is activated the play list will load at the given time. This accommodates the new AUTO START feature. Be aware that the previous play list feature added in the last version has changed. Instead of play lists loading at midnight, they now are checked based on this new Play List Load time. Play Lists will only load if the program is activated and the clock reaches the desired time.
- Fixed play list load problem that prevented subsequent days play lists to load unless the program was exited.
- added "album artist" to the ASCII output file discussed in notes for v1.2.2 (see below v.1.2.2).

#### **v1.2.4**

- added prime commands for Sony to correct occasional lost commands when switching between players.
- If AutoRecycle is activated on setup screen, then at midnight, the software will look for a playlist dated for the next day (ie: 042698.ply (mmddy) or the day of the week (mon.ply, tue.ply, wed.ply, thu.ply, fri.ply, sat.ply, sun.ply) to load, in that order. If found, the current list is flushed and the new playlist is loaded and cued. When current event ends, new playlist will start.
- worked on Sony EOM problem. Still doesn't always catch EOM's for Sony decks. I recommend you turn off End-On-EOM until this issue is resolved.

#### **v1.2.2 'Released April 26, 1998**

- added Sony PSR player support
- added track/disc set on manual control screen
- fixed pgm button on manual control screen
- fixed sony control registration
- may have fixed "type mismatch" error on upgrades

- the manual (wintrax.doc) has been corrected with the correct part numbers and phone number for the X-10 control hardware.
- the manual (wintrax.doc) has been updated to provide Sony cable building instructions.
- added new feature: WINTRAX.DMP data dump. This file is written to the Wintrax subdirectory every time a song is started. It is a comma-quote delimited text file that can be used to monitor Wintrax from other PC's. It should be opened and closed shared, so it doesn't make Wintrax get a file access error.

Along with the data, we pass the actual record number in the Wintrax.DTA file, so the user can get ALL the data for that CD if they wish. The file record looks like this:

```
"Strait, George","Chair, The","Various Artist","CC03 RPM Hit Disk","02:48",
"01-090-04","dance","02:27:05","0040","6","178","178"
```

The data is: Artist, Song Title, Album Artist Album Title, Time, Player-Tray-Track, playlist filename (w/o extension of .ply), total time remaining in playlist, total songs remaining in playlist, this is song 6 in the playlist, the bitmap filename (w/o extension of .bmp), the wintrax.dta record number.

If you want to use the additional data in the wintrax.dta record for this song, you'd look up record #178. The file structure is in the wconvert.bas file that installs with Wintrax, or can be found in the WT\_UTILS.EXE file on our FTP ([www.wintektx.com/ftp/pub/wintrax](http://www.wintektx.com/ftp/pub/wintrax)).

#### **v1.2.1 'Released April 19, 1998**

- added Sony LPT player support
- fixed recycle feature
- fixed autoshtutdown feature
- fixed saving of recycle flag
- fixed saving of cd repeats flag
- fixed subscript error in autoplaylist (censor related)
- fixed autoplaylist from picking censored songs

#### **v1.02.00 'Released March 1998**

(NOTE: REVISED MANUAL IS NOW ONLINE IN WORD7 FORM.)

NEW features include:

Revised Manual (wintrax.doc)

X10 Navigation

AD-PD1 support

WAVE files for everyone!

Complex Filtering

AutoList now uses current Filter

Non-Expiring Control License

New Easier HOTKEY assignments

BMP's for individual songs

External Start/EOM Signals

Pause between songs

Auto database synchronization

**v1.02.00 - (items fixed since 1.01.32)**

- Fixed AutoPlayList to grab cuts from the current filter.
- Put limit on number that can be put in tray field in Data Management.
- Fixed Tray Maintenance report (was only reporting first 100 cds).
- In Data Management screen "Control Type" list box now pulls down.
- Added trap to AutoPlayList to keep it from getting in a loop if not enough songs are found to fulfill the number requested.
- Fixed limit in Filter screen for number of requests for autolist.
- Changed "Repeat" button on Main Screen to show the status of the "Auto Load (Recycle)" setting in Setup. If recycle is checked, button is green.
- Fixed X-10 control.
- Fixed mouse hourglass if autolist can't find enough cuts.
- Fixed saving/loading playlist to drive A or drive B.
- On Setup screen "Auto Load (Recycle)" label was stretched out.
- On autolist, now adds to any existing loaded play list or other autolist.

## Appendix I: Testing your connections

---

CHECKLPT.COM - This program, included with Wintrax, allows you to find the addresses of your LPT ports, and to test your EOM connections. After connecting your cables, run CHECKLPT.COM from your DOS or Windows RUN prompt, using the switch /0. Example: CHECKLPT /0. This puts the program in polling mode. You will see your LPT addresses, some address values, and "input bits". With your players connected, press PLAY on player 1. Input Bit 1 should go away. Press STOP and it should return. Do this for players 2 thru 4 if you have them.

CDSEND.EXE - This program tests PIONEER "SR" only; not SONY SLink/ControlA1. This program allows you to test the SR control of your Pioneer CD players. From your DOS or Windows RUN prompt, use the following command and switches to send a cue command to each player to test the control connections:

```
CDSEND /LPT1 /P1 /M0 /A2
```

Of course, use /LPT2 if you use that port for control. /P? represents the player to test. The player should cue up to disc 2, track 11. Issue "CDSEND /?" for other commands, if you wish to play with the program. The program will only cue up disc 2 track 11 in test mode, so don't bother trying to send various magazine, disc, or track commands. BUT you can issue play, pause, stop, power commands, etc.

If the program fails to control your players, check your ground from the LPT cable to the players. It should be on a bare screw, around the center of the back of the player. ALSO, the audio connections must be made for players 2, 3, and 4, for the ground to make it to each player. (Or you can add ground jumpers from player 1, for test purposes. You shouldn't use these once you're connected, or you may get a "ground loop" hum in your audio.

**Problems? Write us at [support@cdcontrol.com](mailto:support@cdcontrol.com)**

## Appendix J: License Agreement

---

### ***Single End User Product License Agreement And Limited Warranty***

Subject to the following terms and conditions, Wintek Software Company (WSC) grants to you ("User") a non-exclusive license to use the enclosed software product(s) and related manuals. The term "Product" means all the computer software products licensed to User as a single integrated product and the term "Documentation" refers to all the manuals printed or in computer data form, licensed to the User.

1. **Scope of License.** This license allows User to install and use the Product solely on a single computer (i.e. with a single central processing unit). Except as otherwise specified in the Documentation, User may not grant sub-licenses, leases, or other rights in the Product, nor may User transfer, sell, assign, or otherwise convey the Product to another party without WSC's prior written consent. Transfer of the Product to another company may be made on a permanent basis provided no active copies are retained on the original computer. This Agreement automatically terminates if User transfers possession of all copies of the Product or Product Update to another party. A Product Update replaces part or all of a Product or Product Update previously licensed and/or installed. Use of a Product Update terminates the license to use the Product or that part of the Product which the Product Update replaces and User shall destroy or return to WSC all copies of any prior Product or Product Update.

2. **Proprietary Rights.** The Product and Documentation are proprietary products of WSC or WSC's licensor(s) and are protected by United States and International copyright law. By virtue of this Agreement, User acquires only the non-exclusive right to use the Product and does not acquire any rights of ownership in the Product or the media upon which it is embodied. WSC or WSC's licensor(s) shall at all times retain all rights, title, and interest in the Product and the media.

3. **Non-Disclosure, Copies, Alterations.** User agrees not to cause or permit the reverse engineering, disassembly, copying, or decompilation of the Product, under penalty of license termination but not exclusive of any other remedies. User may copy the Product for installation, backup, or other purposes as described in the Documentation. User may not copy nor allow others to copy the Product or Product Update for any other purpose. User agrees not to remove any product identification, copyright notices, or other notices or proprietary restrictions from the Product. User may not copy nor allow others to copy any part of the manuals or other printed material provided with the Product or Product Update by any means, including data transmission or translation or rental.

4. **Limited Warranty.** WSC warrants that the materials of both the Product media and Documentation are not defective and that the software is properly recorded on the media. If either the media or the documentation is physically defective, WSC will replace it free of charge during the 90-day warranty period. User's remedy is limited to return of the media and/or Documentation to the supplier or WSC for replacement. This Limited Warranty is in effect for claims made within 90 days from User's purchase of the Product. Except as specifically stated above, WSC **MAKES NO WARRANTY OR REPRESENTATION, EITHER EXPRESSED OR IMPLIED, INCLUDING WARRANTIES OF MERCHANTABILITY, NON-INFRINGEMENT, OR FITNESS FOR A PARTICULAR PURPOSE, WITH RESPECT TO THIS PRODUCT AND DOCUMENTATION.**

5. **Limitation of Liability.** **TO THE EXTENT PERMITTED BY APPLICABLE LAW, THE LIABILITY OF WSC, IF ANY, FOR DAMAGES RELATING TO ANY PRODUCTS SHALL BE LIMITED TO THE ACTUAL AMOUNTS PAID BY USER FOR SUCH PRODUCT AND SHALL IN NO EVENT INCLUDE INCIDENTAL OR CONSEQUENTIAL DAMAGES OF ANY KIND.**

6. **Miscellaneous.** This Agreement is governed by the laws of the State of Texas. If any provision of this Agreement is declared invalid, illegal or unenforceable, the remaining provisions of this Agreement shall remain in effect.

**Wintrax®**

**Appendix K: Product Registration Form**

---

Please enter your product information on this form for future reference.  
Your registration information is usually printed on your original invoice.

Registered User Name: \_\_\_\_\_

Registration Serial #: \_\_\_\_\_ Date: \_\_\_/\_\_\_/\_\_\_ Version: \_\_\_\_\_

Download User Name: \_\_\_\_\_

Download Password: \_\_\_\_\_

Please write this information on your disk label. This software was already registered for warranty when it was invoiced. There is no need to send any other info to WSC.

**©1996-2001 Wintek Software Company**

**PO Box 330655**

**Fort Worth TX 761363-0655**

**Sales/Support: (817) 370-7429**

**Fax: (817) 370-7411**

**Open 9 to 5 CST – Monday through Friday**

**E-Mail: “[info@cdcontrol.com](mailto:info@cdcontrol.com)”**

**Web-URL: <http://www.cdcontrol.com>**